

# Roadblocks on the *Tōkaidō*: Challenges in Cross-Institutional Collaboration

Matthew Hayes, PhD (Duke University)

Ann Marie Davis, PhD, MLS (The Ohio State University)



CEAL Annual Meeting  
(Committee on Japanese Materials)  
Boston, MA | 16 March 2023

# 1. Project Overview and Contributors

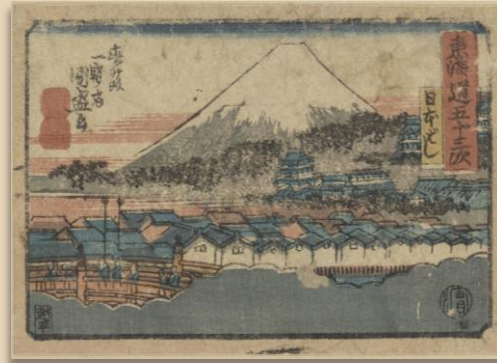
## *Off the Beaten Path: Alternative Views of the Fifty-Three Tōkaidō Stations*



Andō Hiroshige. *Tokaidō gojūsantsugi*  
(*Kyōka* edition, ca. 1840)



Ikku Jipensha. *Tokaido*  
*Gojūsantsugi Kokkei*  
*Hizakurige: Zen* (1886)



Various artists. *Tōkaidō meisho zue*  
(1797)



Shōrakusai. *Tōkaidō fūkei no zu*  
(ca. late-18<sup>th</sup> c.)



Various artists. *Tōkaidō gojūsantsugi*  
*manga emaki* (ca. late-19<sup>th</sup> c.)

### **Librarians**

Rebecca Corbett (USC)

Ann Marie Davis (OSU)

Matthew Hayes (Duke)

### **Metadata/DH Specialists**

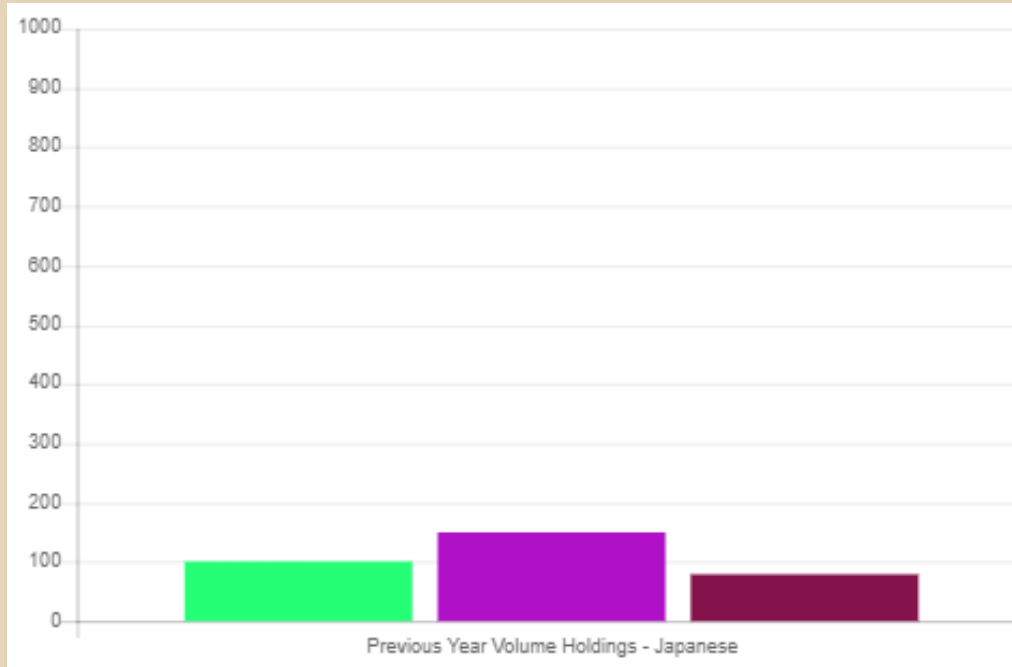
Eric Buckenmeyer (Kennesaw State)

Jesse Drian (USC)

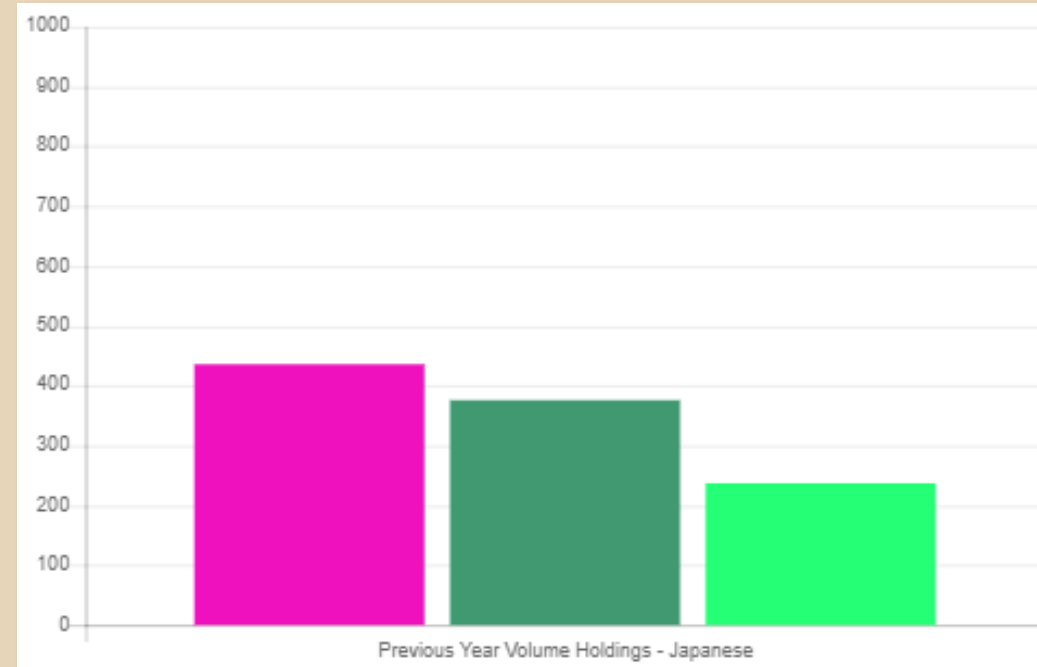
### **Scalar Developer**

Curtis Fletcher (USC)

## 2. Collections Scale of Participating Libraries



University	Japanese Holdings 2021
OSU	149,526
Duke	101,423
USC	79,331




University	Japanese Holdings 2021
Berkeley	436,848
Harvard	376,828
Princeton	237,928

# 3. Challenges in Digitization

- Speed/Timelines
  - Delays, closures
- Divisional capacities
  - Centralized digitization serving entire library
- Costs
  - Unclear, unwritten, prohibitive



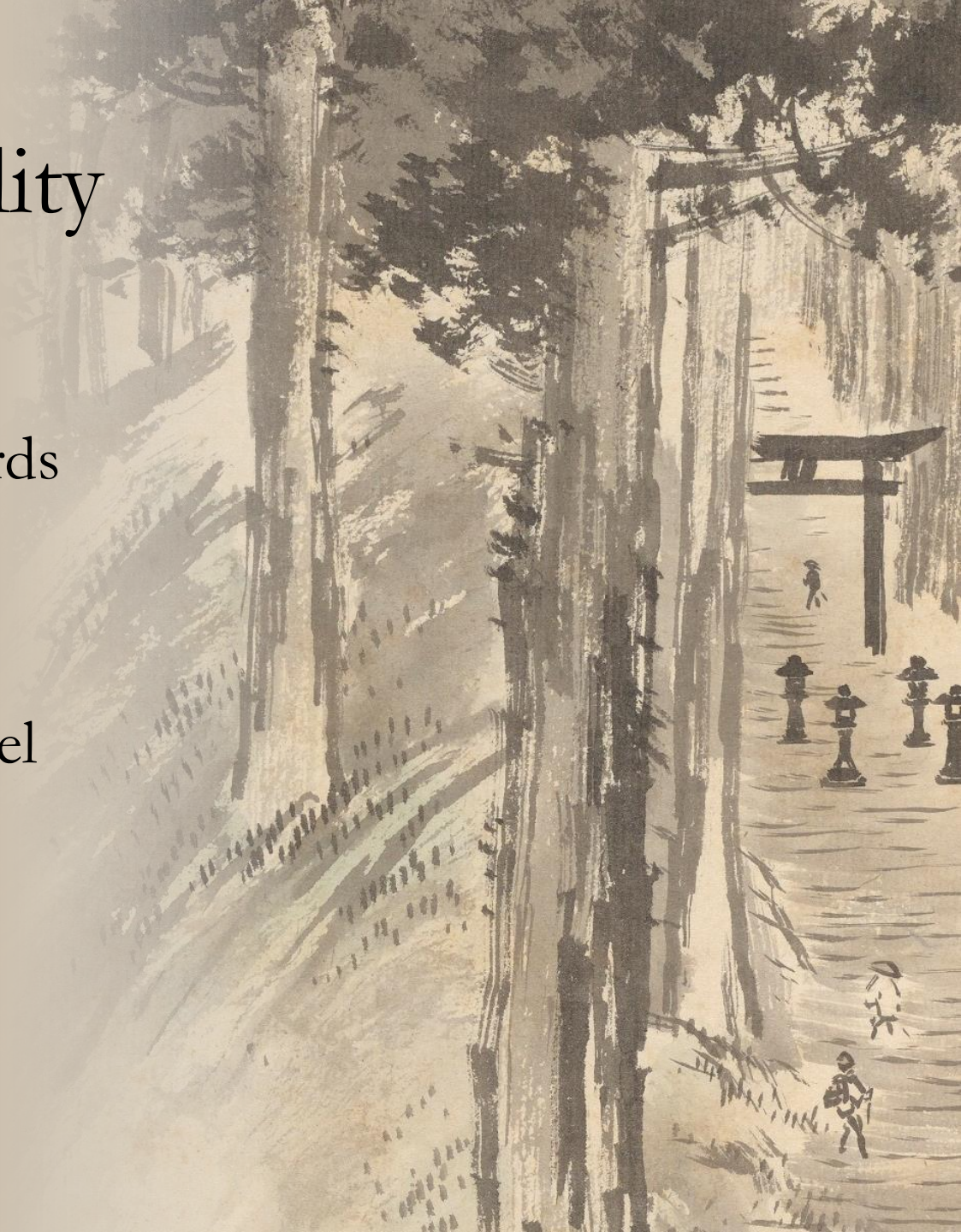
A traditional Japanese ink wash painting (suiboku-ga) depicting a forest path. The path leads towards a torii gate in the distance. Several figures are visible: one near the gate, another further down the path, and a group of figures in the foreground. The style uses varying ink tones and brushwork to create depth and texture in the trees and path.

## 3.1 Challenges in Image-Hosting

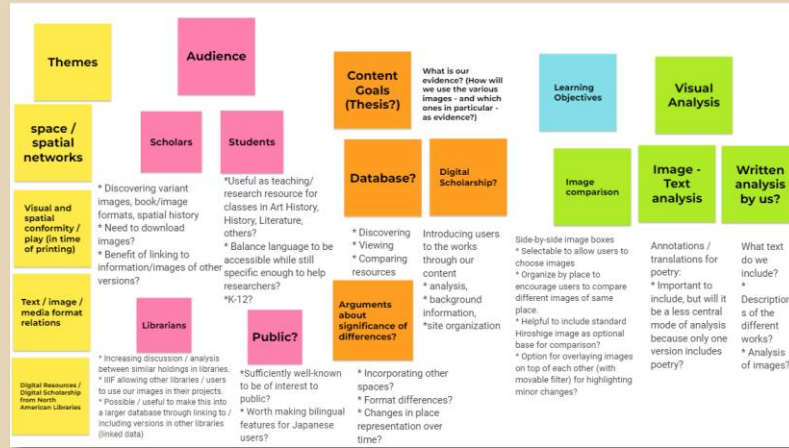
- Platform compatibility
  - IIF  $\leftarrow \rightarrow$  Scalar
- Varied institutional responses to IIF
  - Some compliant, some non-compliant
- Hosting and potential ephemerality

## 3.2 Challenges in Accessibility

- Institutional parity
  - Changing standards, unknown standards
- Platform parity
  - Access at project level vs platform level



# 4. Current State of Project



Storyboarding

Newest planning tools:



Nav bar

Introduction to site

Navigation map

Versions of 53 Stations

Places

Analysis / Info on themes, etc.

Kyōka in USC Gojastanbugi

Places beyond 53 stations

Example of side-by-side IIF viewer

Can have thumbnails at bottom and/or list of items on side

Scalar page navigation:

Next page in pathway (next place) / associated tags

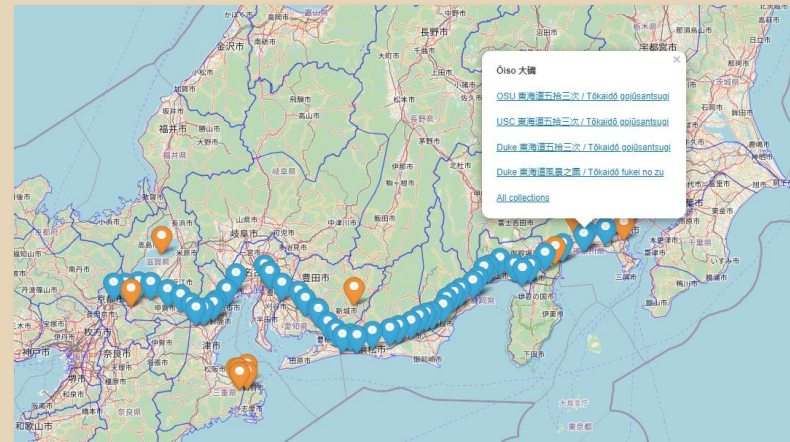
Example from <https://scalar.chass.ncsu.edu/bodies-and-structures/daily-life-and-work-17path=gail-landing-page>

**Title: Nihonbashi 日本橋**

This page is tagged by:

Bodies | Buildings | Capital, goals | Discourses of Development | Infrastructure of Circulation | Material Culture | Nation / Okinawa | Transport Devices

Visual Mockups



Testing with ArcGIS

## 5. Takeaways

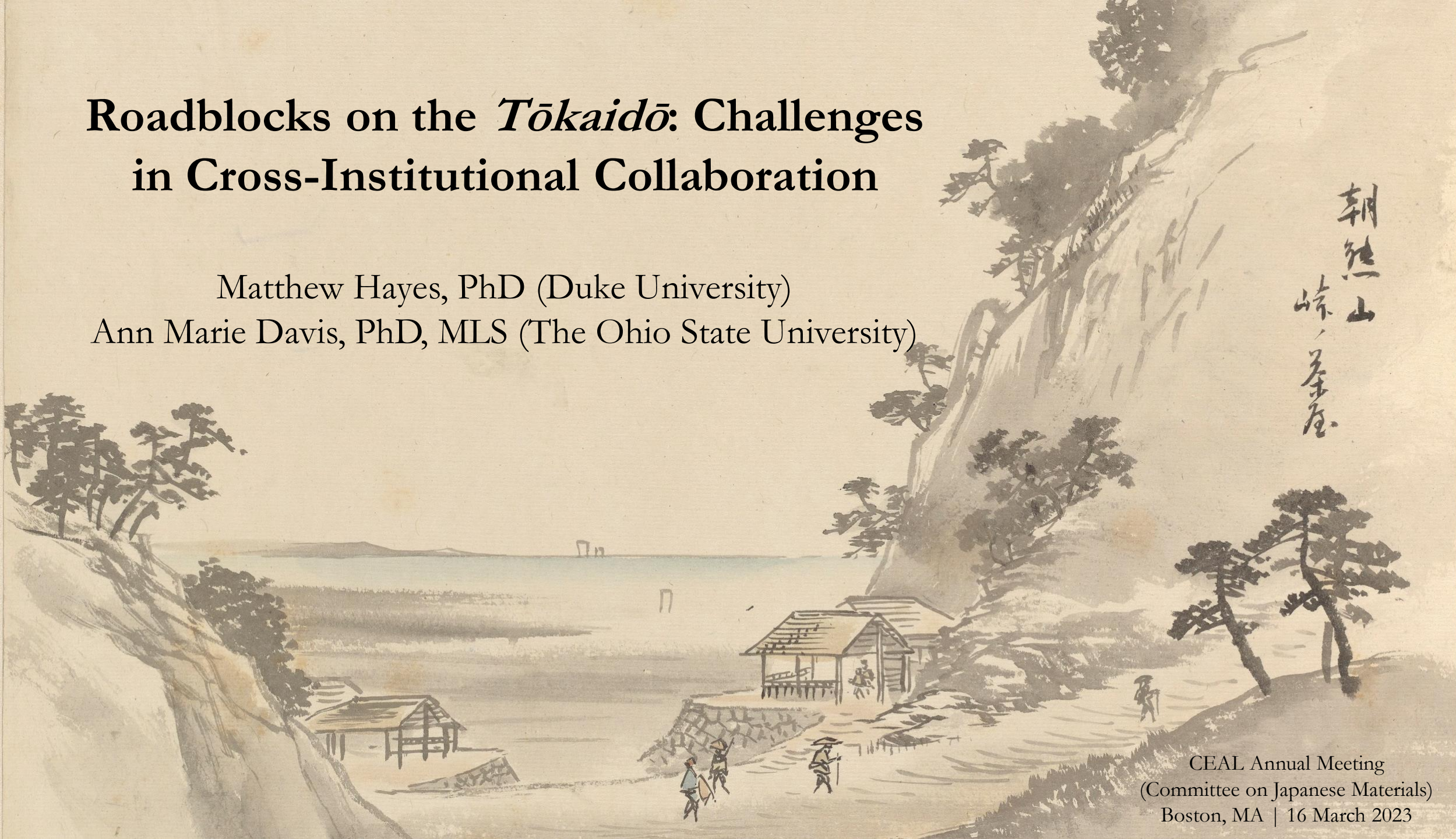
- Institutions with mid-sized collections may place unique demands on collaborative workflows compared to institutions with larger-collections.
- Some challenges are unavoidable. Early conversations with divisional stakeholders will help to clarify workflows—and may shape the project itself!
- If you have access to only a small pool of materials, scoping the project in flexible ways will ensure that the project gets off the ground.



# Roadblocks on the *Tōkaidō*: Challenges in Cross-Institutional Collaboration

Matthew Hayes, PhD (Duke University)

Ann Marie Davis, PhD, MLS (The Ohio State University)



CEAL Annual Meeting  
(Committee on Japanese Materials)  
Boston, MA | 16 March 2023