

Council on East Asian Libraries (CEAL) - Committee on Chinese
Materials (CCM) - Online Panel Discussion: Research on China
January 19, 2026

Discovering Chinese Archives through Archival Handbooks and Geo-referencing



Joshua Seufert
East Asian Library, Princeton University

Contents

- Background
- Material and collection situation
- Cataloging and geo-referencing
- Discovery and access services
- Conclusions and steps for the future

Chinese Archives

An Introductory Guide

YE WA *and*

JOSEPH W. ESHERICK

葉華莊題



中國檔案指南

Ye, Wa., and Joseph Esherick.
Chinese Archives: An Introductory Guide. Berkeley: Institute of East Asian Studies, University of California, 1996.



BROWSING CATEGORY
Fresh from the Archives
181 posts



Archives nationales & Bibliothèque nationale de France (BnF).

Julie Bellemare 8 minute read

A review of Archives nationales and Bibliothèque nationale de France (BnF), Paris, France. I am currently writing a doctoral dissertation on the development of...



The National Library of China Ancient Books Section

Xue Zhang 4 minute read

A review of the National Library of China Ancient Books Section (中国国家图书馆古籍部) in China, the majority of central government archives of...



The China Film Archive 中国电影资料馆

A.C. Baecker and Mei Li Inouye 5 minute read

A review of the China Film Archive (中国电影资料馆) The China Film Archive (CFA) is sub-division of the China Film Group...



“Chinese archives are in a state of profound uncertainty and flux, if not full-blown crisis. In the name of protecting national security, the central government under Xi Jinping has imposed regulations that restrict scholarly activity—from closing off archival material related to post-1949 history to allowing only approved individuals into important institutions such as the Ministry of Foreign Affairs.”

“Methodologically, there is no systematic framework akin to American libraries or government archives. For some holdings, online catalogs are available, though they are usually poorly organized and not comprehensive. At other sites, paper or electronic catalogs are only available on-site; sometimes these can be copied or photographed, but in most cases the use of any phone or camera is entirely prohibited.”

<https://www.clir.org/wp-content/uploads/sites/6/2023/09/The-Chinese-Archive.pdf>

Chinese Archival Handbooks

档案馆指南

- Most favored resource by Ye and Esherick
- Catalogs of finding aids for each of the archival collections held at a single Archive
- Regulation for compilation of individual Handbooks issued in 1992 by the Chinese National Archive Administration

中國檔案館指南叢書

四川省 档案馆指南

GUIDE TO SICHUAN PROVINCIAL ARCHIVES



中国档案馆指南丛书

published by:

中国档案出版社, 1994-

Other Official Publications – 正式出版物

西安市档案馆 指南

西安市档案馆编



西安出版社



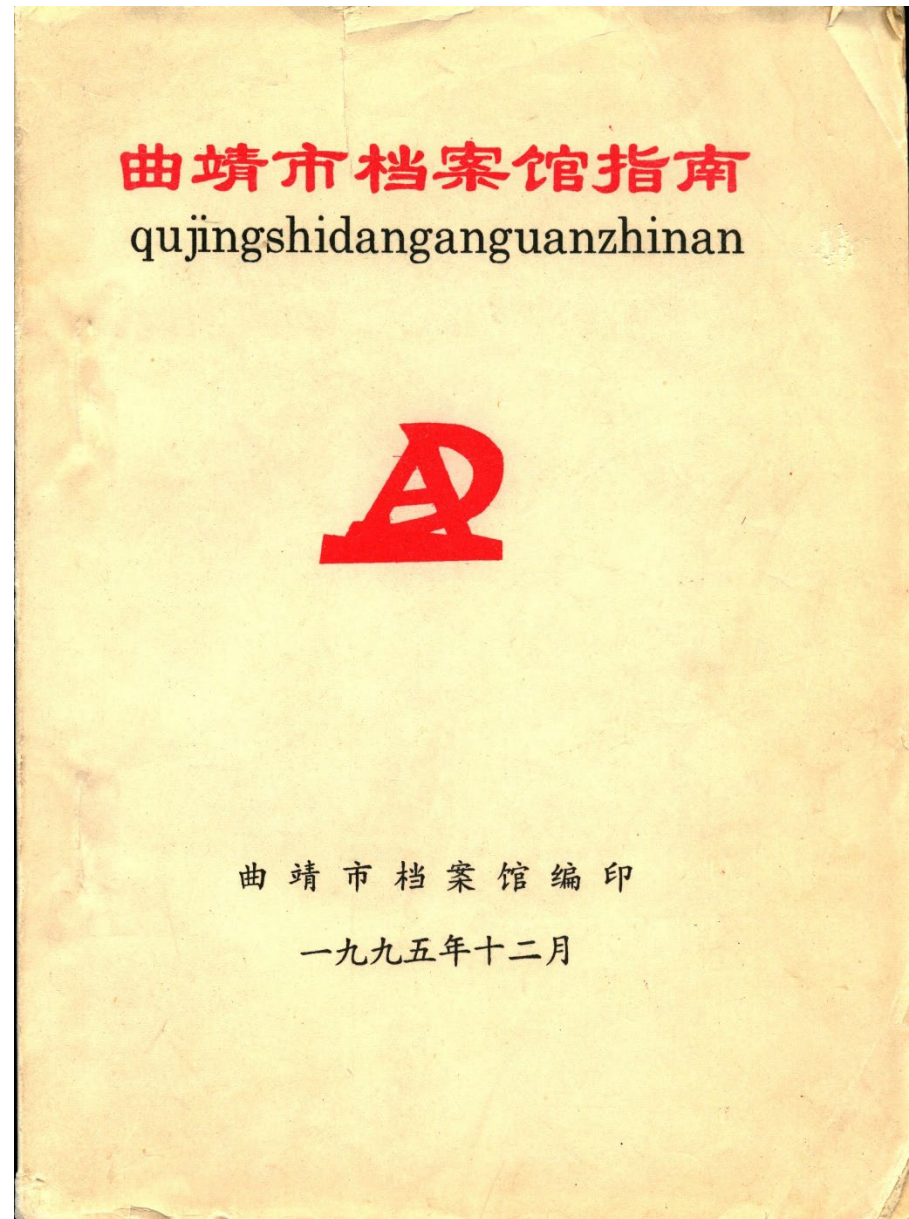
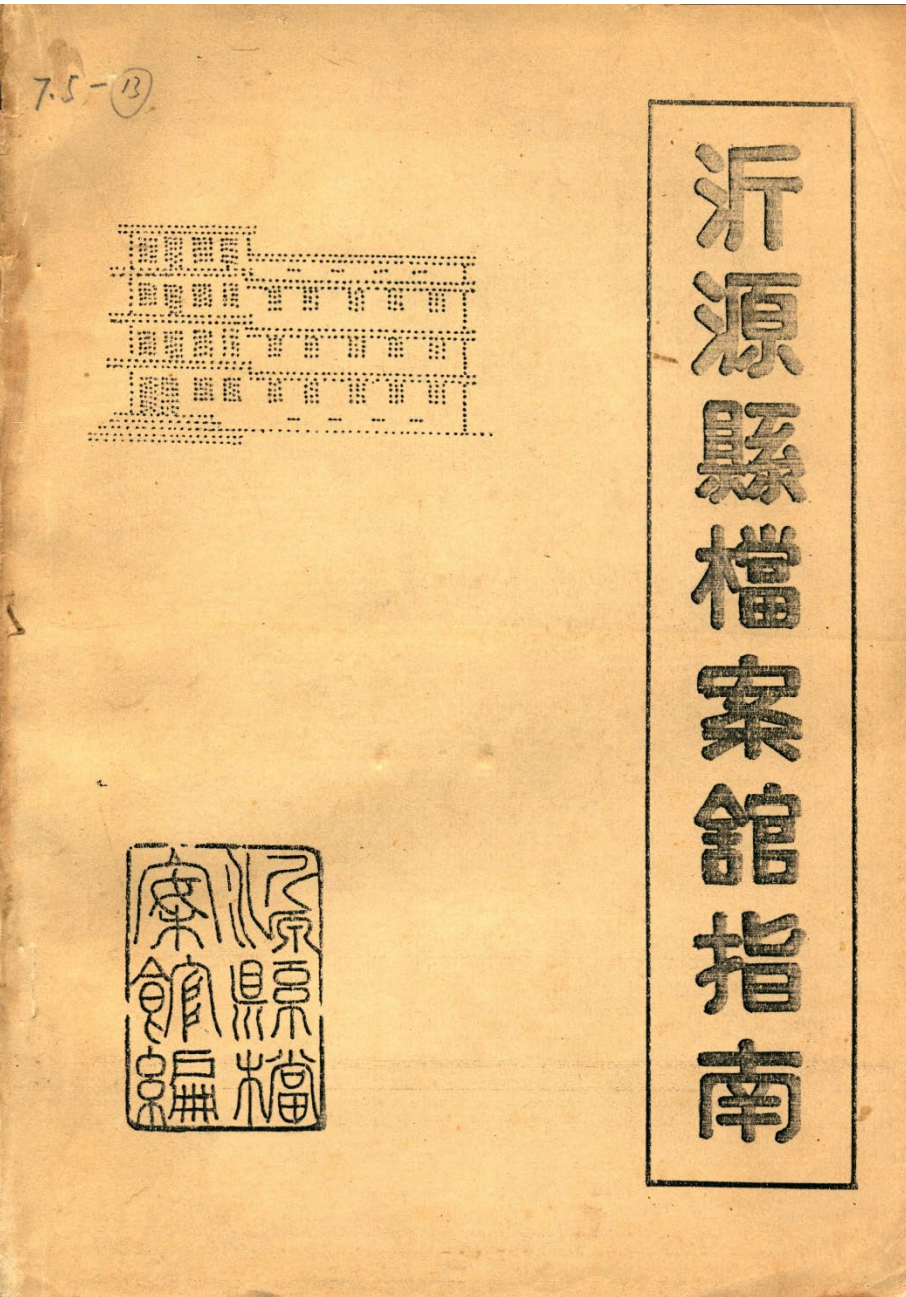
晋城市档案馆指南

JIN CHENG SHI DANG AN GUAN ZHI NAN

晋城市档案局（馆）编

新华出版社

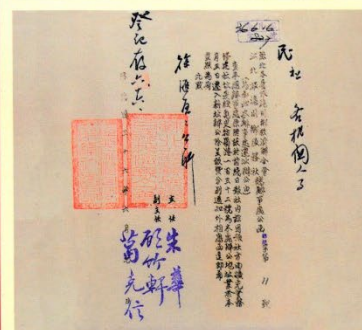
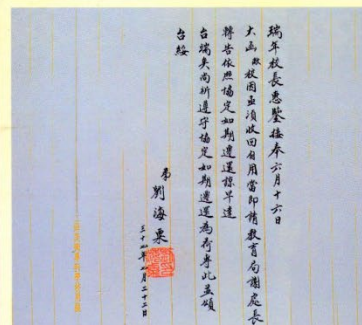
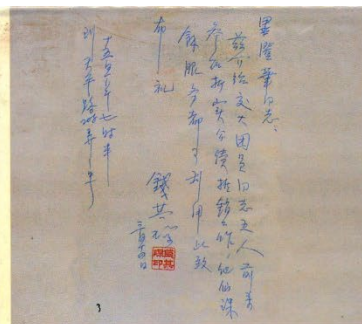
Internal publications - 非正式出版物



Internal publications - 非正式出版物

上海市浦东新区档案馆指南

上海市浦东新区档案局(馆) 编
上海市浦东新区城建档案信息管理中心
二〇〇六年七月

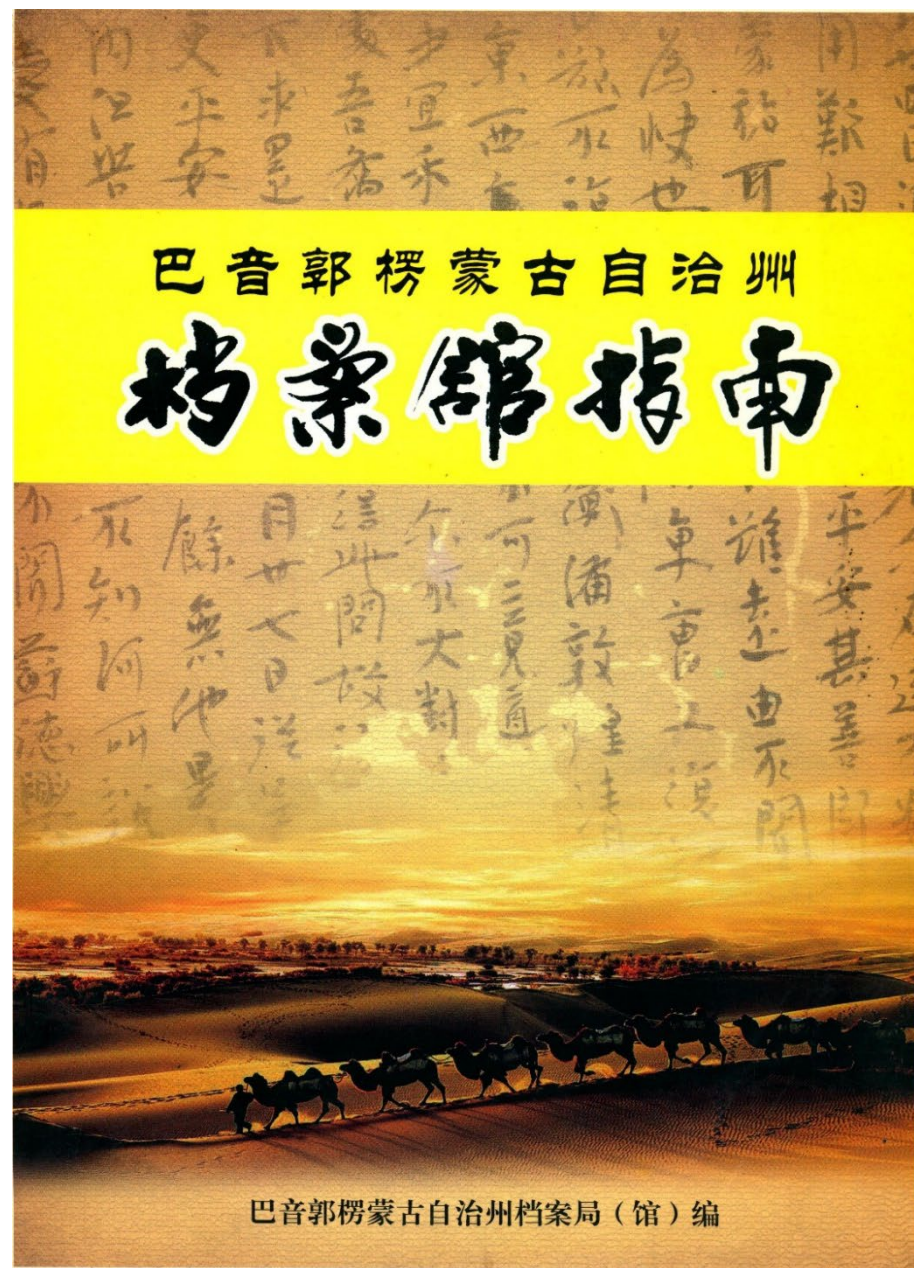
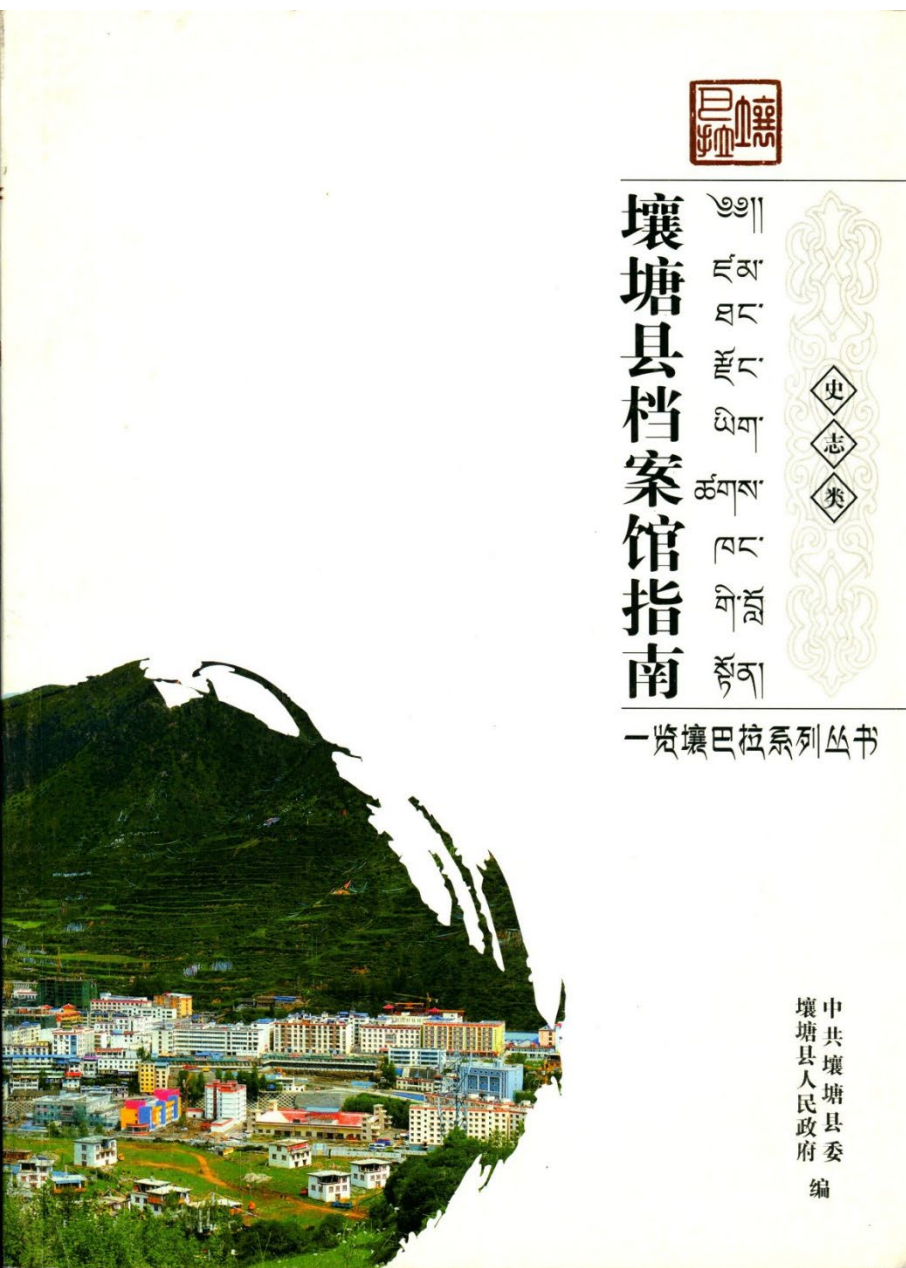


上海市徐汇区档案馆简明指南



上海市徐汇区档案局(馆)编

Publications from Archives in National Minority Regions



Handbooks for City Development and Company Archives

苏州市城建档案馆指南

苏州市城乡建设档案馆编

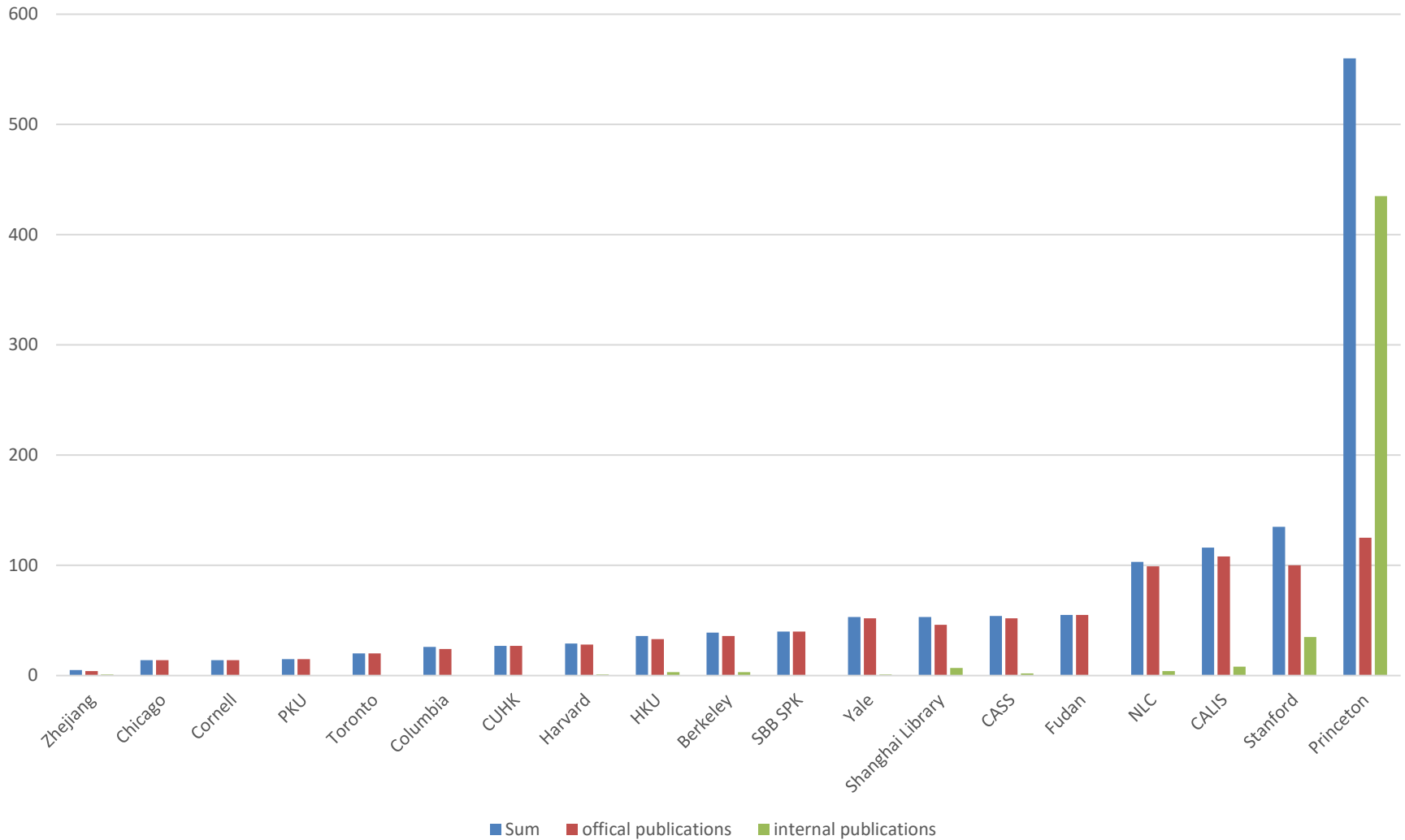
东方锅炉厂档案馆指南

第一卷

DANGANGUAN ZHINAN

东方锅炉厂档案处

Archival Handbook Collections





Archives
中国档案馆
简明指南

《中国档案馆简明指南》编委会编

中国档案出版社

中国档案馆简明指南.
北京: 中国档案出版社, 2009.

名称	汉语拼音拼写	数字码
云南省	Yunnan Sheng	530000
西藏自治区	Xizang Zizhiqu	540000
陕西省	Shanxi Sheng	610000
甘肃省	Gansu Sheng	620000
青海省	Qinghai Sheng	630000
宁夏回族自治区	Ningxia Huizu Zizhiqu	640000
新疆维吾尔自治区	Xinjiang Weiwuer Zizhiqu	650000

北京市

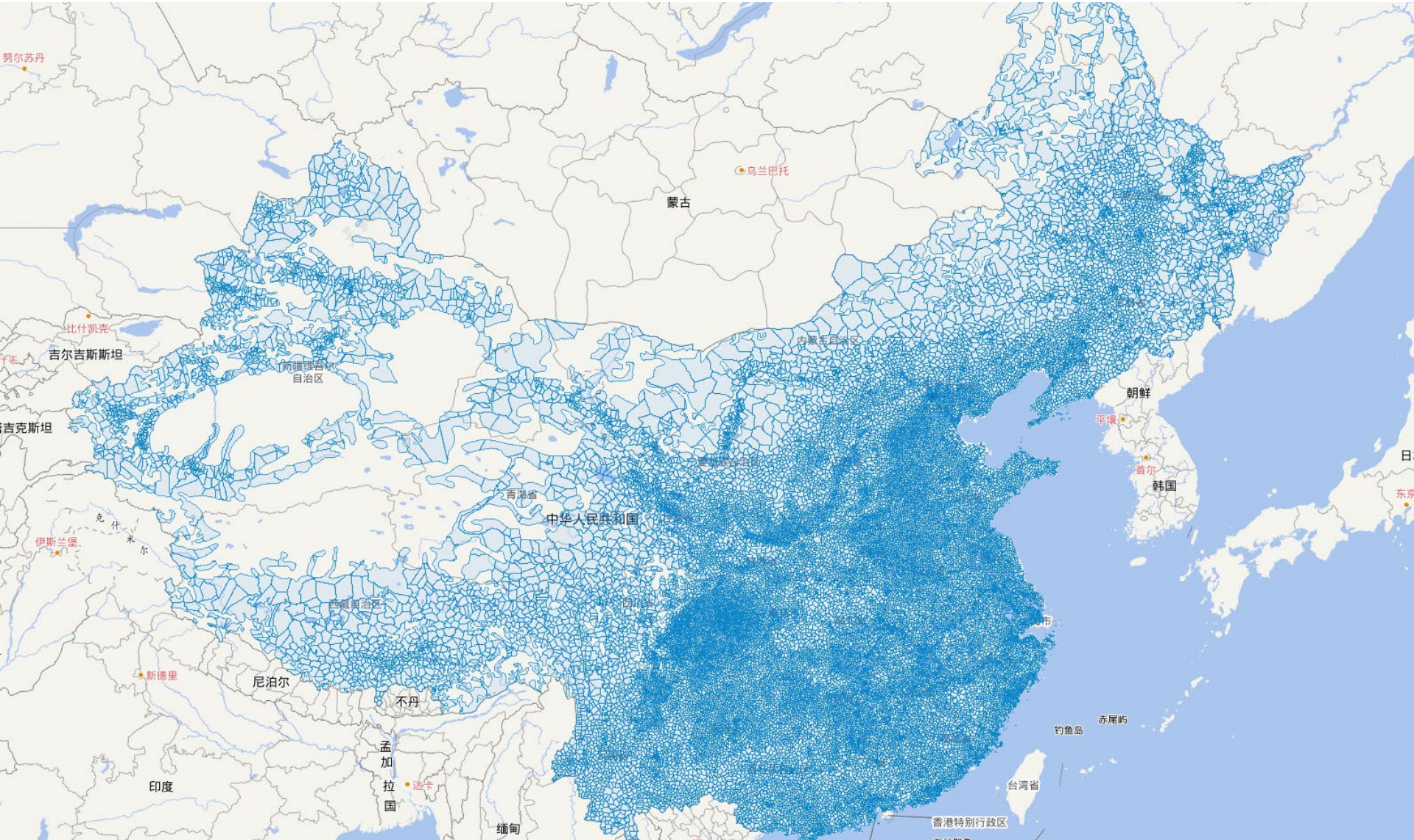
名称	地区汉语拼音拼写	档案馆代码
中央档案馆		411001
中国第一历史档案馆		411002
北京市档案馆	Beijing Shi	411010
东城区档案馆	Dongcheng Qu	411011
西城区档案馆	Xicheng Qu	411012
崇文区档案馆	Chongwen Qu	411013
宣武区档案馆	Xuanwu Qu	411014
朝阳区档案馆	Chaoyang Qu	411015
丰台区档案馆	Fengtai Qu	411016
石景山区档案馆	Shijingshan Qu	411017
海淀区档案馆	Haidian Qu	411018
门头沟区档案馆	Mentougou Qu	411019
房山区档案馆	Fangshan Qu	411028
通州区档案馆	Tongzhou Qu	411022
顺义区档案馆	Shunyi Qu	411021
昌平区档案馆	Changping Qu	411020
大兴区档案馆	Daxing Qu	411023
怀柔区档案馆	Huairou Qu	411025
平谷区档案馆	Pinggu Qu	411024
密云县档案馆	Miyun Xian	411026
延庆县档案馆	Yangqing Xian	411027
北京市城市建设档案馆	Beijing Shi	411405

Chinese State Archives Number

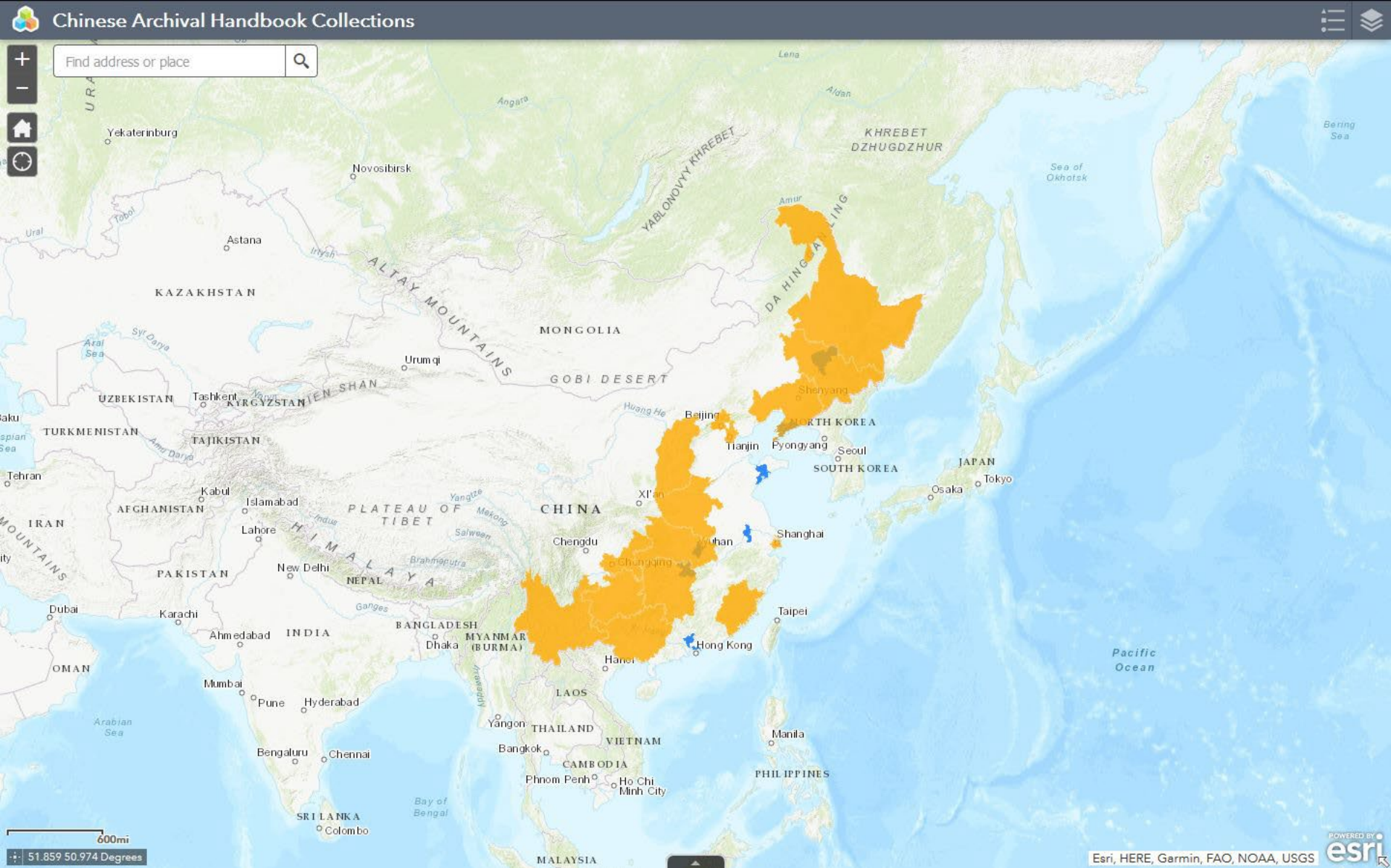
Administrative Codes, (2-8 digits)

46	Hainan Sheng	4690	Shengzhixiaxingzhengdan	469005	Wenchang Shi	53997700.0000000000	
46	Hainan Sheng	4690	Shengzhixiaxingzhengdan	469005	Wenchang Shi	46750500.0000000000	
46	Hainan Sheng	4690	Shengzhixiaxingzhengdan	469025	Baishalizu Zizhi	151323000.0000000000	
46	Hainan Sheng	4690	Shengzhixiaxingzhengdan	469025	Baishalizu Zizhi	169055000.0000000000	
46	Hainan Sheng	4690	Shengzhixiaxingzhengdan	469025	Baishalizu Zizhi	319075000.0000000000	
46	Hainan Sheng	4690	Shengzhixiaxingzhengdan	469025	Baishalizu Zizhi	272797000.0000000000	
46	Hainan Sheng	4690	Shengzhixiaxingzhengdan	469025	Baishalizu Zizhi	166587000.0000000000	
46	Hainan Sheng	4690	Shengzhixiaxingzhengdan	469027	Ledonglizu Zizhi	305600000.0000000000	
46	Hainan Sheng	4690	Shengzhixiaxingzhengdan	469027	Ledonglizu Zizhi	140273000.0000000000	
46	Hainan Sheng	4690	Shengzhixiaxingzhengdan	469027	Ledonglizu Zizhi	136586000.0000000000	
32	Jiangsu Sheng	3201	Nanjing Shi	320116	Liuhe Qu	26415100.0000000000	
32	Jiangsu Sheng	3201	Nanjing Shi	320116	Liuhe Qu	45674300.0000000000	
32	Jiangsu Sheng	3201	Nanjing Shi	320116	Liuhe Qu	81873400.0000000000	
32	Jiangsu Sheng	3201	Nanjing Shi	320116	Liuhe Qu	62294800.0000000000	
32	Jiangsu Sheng	3201	Nanjing Shi	320116	Liuhe Qu	44522600.0000000000	
32	Jiangsu Sheng	3201	Nanjing Shi	320124	Lishui Xian	161530000.0000000000	
32	Jiangsu Sheng	3201	Nanjing Shi	320125	Gaochun Xian	53818200.0000000000	
32	Jiangsu Sheng	3201	Nanjing Shi	320125	Gaochun Xian	174846000.0000000000	
32	Jiangsu Sheng	3202	Wuxi Shi	320211	Binhu Qu	52910300.0000000000	
32	Jiangsu Sheng	3202	Wuxi Shi	320211	Binhu Qu	8937750.0000000000	
32	Jiangsu Sheng	3202	Wuxi Shi	320211	Binhu Qu	32860000.0000000000	
32	Jiangsu Sheng	3202	Wuxi Shi	320211	Binhu Qu	405253000.0000000000	
32	Jiangsu Sheng	3202	Wuxi Shi	320211	Binhu Qu	25213900.0000000000	
32	Jiangsu Sheng	3202	Wuxi Shi	320211	Binhu Qu	35116200.0000000000	
32	Jiangsu Sheng	3202	Wuxi Shi	320282	Yixing Shi	81668200.0000000000	
32	Jiangsu Sheng	3202	Wuxi Shi	320282	Yixing Shi	331465000.0000000000	
32	Jiangsu Sheng	3202	Wuxi Shi	320282	Yixing Shi	135244000.0000000000	
32	Jiangsu Sheng	3202	Wuxi Shi	320282	Yixing Shi	121399000.0000000000	
32	Jiangsu Sheng	3202	Wuxi Shi	320282	Yixing Shi	83640100.0000000000	
32	Jiangsu Sheng	3202	Wuxi Shi	320282	Yixing Shi	100517000.0000000000	
32	Jiangsu Sheng	3202	Wuxi Shi	320282	Yixing Shi	48169200.0000000000	
32	Jiangsu Sheng	3202	Wuxi Shi	320282	Yixing Shi	44197200.0000000000	

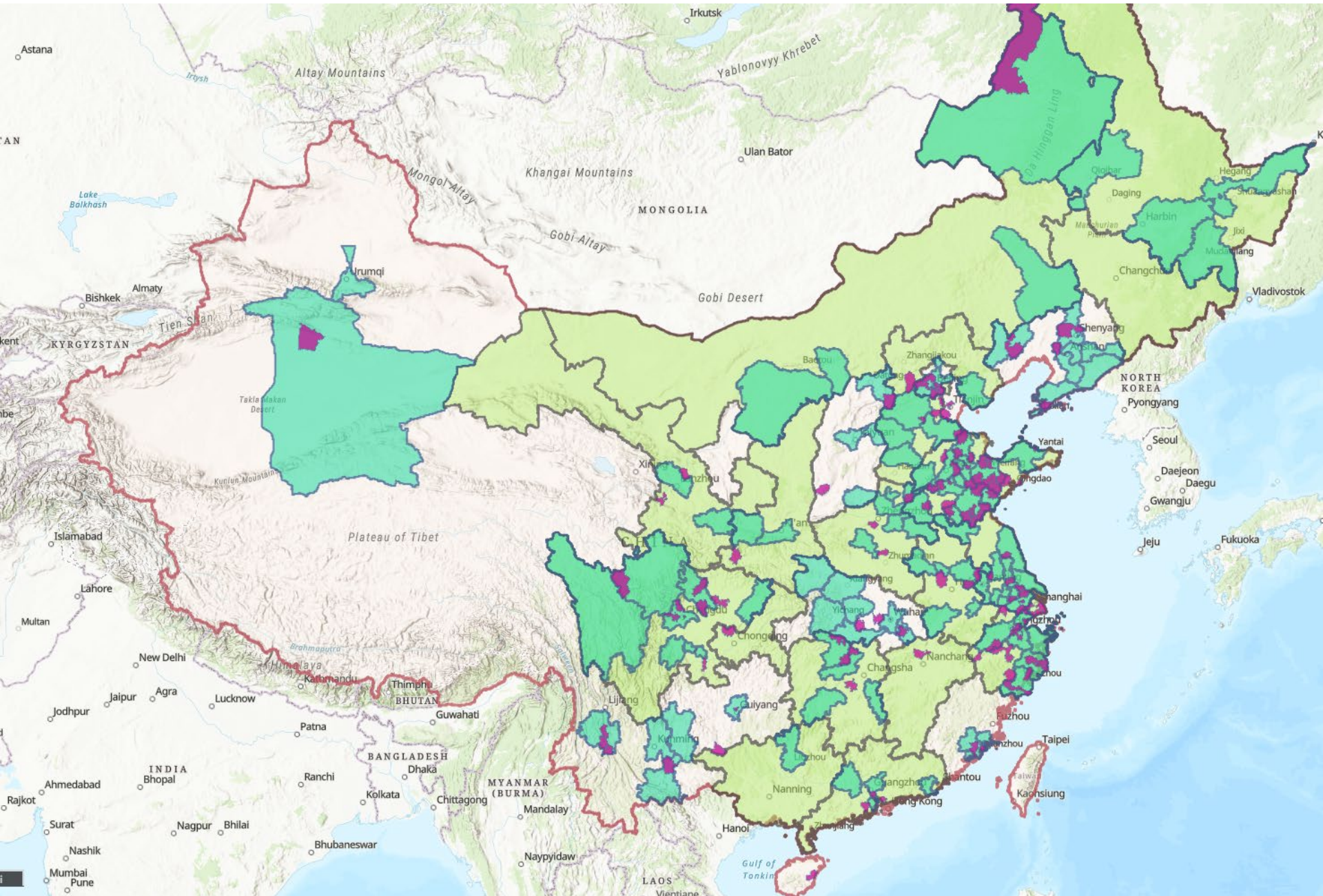
2010 Township Census Map



Coverage of Princeton pre-Project Holdings

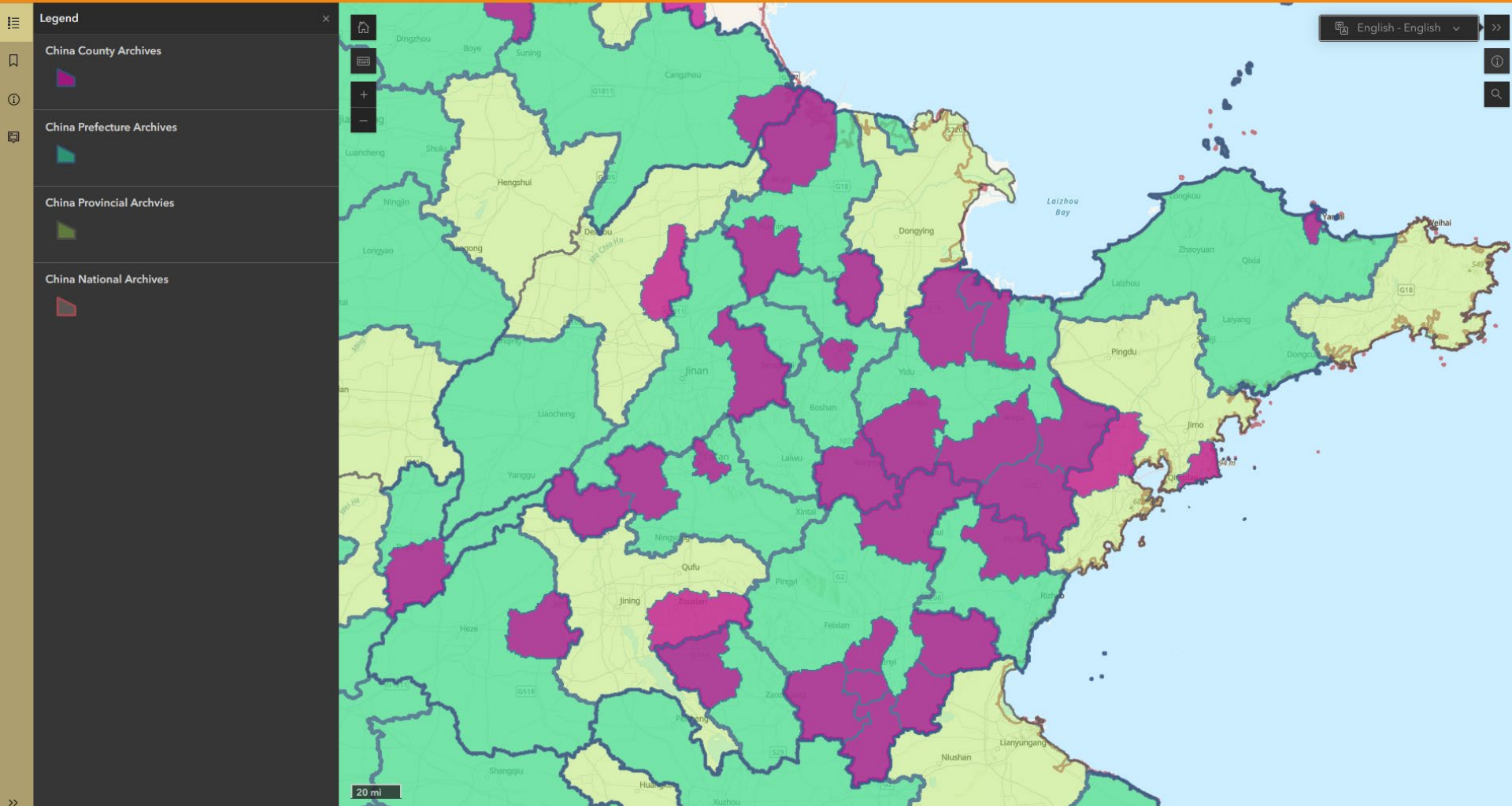


Coverage of current Princeton Holdings



Coverage of current Princeton Holdings in Shandong

Princeton Chinese Archival Handbook Collection



Catalog Record with ToC Enrichment

Keyword ▾

Search...



Advanced Search

Bookmarks (0)

↻ Start over

← Back to search

🗉 Cite

➦ Send to ▾

Bookmark



临沂市档案馆指南 / 临沂市档案馆.

Linyi Shi dang an guan zhi nan / Linyi Shi dang an guan.

Author [Linyi Shi dang an guan \[Browse\]](#)
[临沂市档案馆 \[Browse\]](#)

Format Book

Language Chinese

Edition Di 1 ban.
第1版.

Published/Created Linyi Shi : Linyi Shi dang an guan, 2015.
临沂市 : 临沂市档案馆, 2015.

Description 274 pages ; 24 cm

Other versions

[Chinese archival handbook collection.](#)
id 99118465483506421

[Leshan Shi dang an guan guan cang dang an gai shu / Leshan Shi dang an guan bian.](#)
id 99118252913506421

[Shanxi Sheng dang an guan zhi nan = Guide to Shanxi provincial archives / Shanxi Sheng dang an guan bian.](#)
id 9931776983506421

Available Online

[Table of contents and List of funds](#)

[Online Content](#)

Copies in the Library

East Asian Library - Reference ▾

CD2057 .Z437200 2015
[Call no. browse](#)

Available

[Request](#)

Scanned ToC and list of archival fonds in IIF

CONTENTS << 临沂市档案馆指南 / 临沂市档案馆.

8
9
10
11
12
13
14
15
16

附录部分

附 录 部 分

档案馆馆藏档案全宗名册

全宗号	全宗名称	案卷数量(卷)				归档文件(件)				起止年代
		永久	长期	短期	合计	永久	30年	10年	合计	
1	沂蒙地委	103			103					1941 - 1950
2	沂蒙专署	37			37					1944 - 1950
3	滨海地委	172			172					1942 - 1950
4	滨海专署	87			87					1940 - 1950
5	滨海一、二、三地委	21			21					1943 - 1946
6	鲁中三地委	25			25					1945 - 1949
7	台枣地委	22			22					1940 - 1950
8	台枣专署	11			11					1948 - 1950
9	滨海军分区	19			19					1941 - 1948

>> MORE INFORMATION

About the item

Author
Linyi Shi dang an guan

Extent
274 pages ; 24 cm

Identifier
<http://arks.princeton.edu/ark:/88435/vm40z212m>

Title
临沂市档案馆指南 / 临沂市档案馆.

Type
Handbooks and manuals
Finding aids

Content Type
Book

Contributor
East Asian Library and the Gest Collection. Chinese Archival Handbook Collection

Creator
Linyi Shi dang an guan
临沂市档案馆

Date
2015

Language
Chinese

Publisher
Linyi Shi : Linyi Shi dang an guan, 2015.
临沂市 : 临沂市档案馆, 2015.

Subject

Download Share Responsible Collection Description Rights and Permissions Full Screen

PDF Download

CONTENTS << 临沂市档案馆指南 / 临沂市档案馆

11

附录部分

附录部分

档案馆馆藏档案全宗名册

全宗号	全宗名称	案卷数量(卷)				归档文件(件)				起止年代
		永久	长期	短期	合计	永久	30年	10年	合计	
1	沂蒙地委	103			103					1941 - 1950
2	沂蒙专署	37			37					1944 - 1950
3	滨海地委	172			172					1942 - 1950
4	滨海专署	87			87					1940 - 1950
5	滨海一、二、三地委	21			21					1943 - 1946
6	鲁中三地委	25			25					1945 - 1949
7	台枣地委	22			22					1940 - 1950
8	台枣专署	11			11					1948 - 1950
9	滨海军分区	19			19					1941 - 1948

Download

- Whole image 1000 x 1421px (jpg)
- Current view 1993 x 1556px (jpg)
- Whole image 1993 x 2834px (jpg)
- Download the original file (jpg)
- Download as PDF (pdf)

Download Close

Download Share Responsible Collection Description Rights and Permissions

MORE INFORMATION

About the item

Author
Linyi Shi dang an guan

Extent
274 pages ; 24 cm

Identifier
<http://arks.princeton.edu/ark:/84435/vm4bz212m>

Title
临沂市档案馆指南 / 临沂市档案馆

Type
Handbooks and manuals
Finding aids

Content Type
Book

Contributor
East Asian Library and the Gest Collection. Chinese Archival Handbook Collection

Creator
Linyi Shi dang an guan
临沂市档案馆

Date
2015

Language
Chinese

Publisher
Linyi Shi : Linyi Shi dang an guan, 2015.
临沂市 : 临沂市档案馆, 2015.

Subject

Full Screen

ToC as ILL reference

CONTENTS << 临沂市档案馆指南 / 临沂市档案馆

124	地委党史委	13	4		17					1981 - 1987
125	地区事管处	23	5		28					1984 - 1988
126	市审计局	186	675		861					1984 - 2003
127	市社联	262	55		317					1982 - 1999
128	市建材工业公司	307	345		652					1984 - 2001
129	临沂粮校	279	167		446					1980 - 1994
130	地区信访办	55	58		113					1987 - 1990
131	地区扶贫办	265	197		462					1985 - 1994
132	临沂汽运公司	679	1175		1854					1949 - 1993
133	市民族宗教局	178	243		421					1984 - 1999
134	地区新华书店	113	161		274					1953 - 1990
135	临沂电大	893	157		1050					1978 - 1994
136	临沂教育学院	600	119		719					1979 - 1993
137	临沂商校	534	147		681					1974 - 2008
138	市侨办	130	102	69	301					1978 - 2000
139	地区保险公司	166	282		448					1981 - 1990
140	地区中医医院	224	106		330					1976 - 1994
141	市防空办	217	135		352					1969 - 1996

10 11 12 13 14 15 16 17

Download Share Responsible Collection Description Rights and Permissions Full Screen

MORE INFORMATION

ToC as ILL reference

CONTENTS

<<

临沂市档案馆指南 / 临沂市档案馆

目 录

临沂市民族宗教局全宗介绍	155
临沂市侨务办公室全宗介绍	156
临沂市人民防空办公室全宗介绍	156
临沂市环境保护局全宗介绍	157
临沂地区畜牧局全宗介绍	158
临沂市农科院全宗介绍	159
临沂市援川办全宗介绍	160
三、检察机关	
临沂检察分院全宗介绍	161

Conclusions

- Project addresses immediate needs of researchers
- Project uses GIS Discovery
- Unique identifiers (Administrative Region Code and Archive Code are part of each original catalog entry) > Linked Data
- ToC and archival fonds as catalog enrichment
- ToC can be used as basis for ILL requests
- Basis for AI-based dataset project (based on Qwen working with a pre-defined JSON schema)



You can try it here:

<https://libguides.princeton.edu/chinese-archival-handbooks>

Thank you!



邵玉书 Joshua Seufert
jseufert@princeton.edu

