

UBC Library & FROGBEAR

*Librarians as Partners in Knowledge Infrastructure:
Metadata & Collaborative East Asian Digital Projects*

Amber Saundry (she/her), Digital Repository Librarian
Kelly Gauvin (she/her), Digital Repository Specialist

March 11, 2026



Land Acknowledgement



We acknowledge that UBC's two main campuses are situated within the ancestral and unceded territory of the x^wməθk^wəy'əm (Musqueam) people and in the traditional, ancestral, unceded territory of the Syilx Okanagan Nation and their peoples.



cIRcle is UBC's open access institutional repository for published & unpublished material created by the UBC community & its partners, including faculty, students, and staff

- Accept traditional & non-traditional teaching & research outputs
- Currently holds more than 90,000 items & actively growing

We encourage you to [explore our website](#) to learn more

- Main goals, scope, workflows, guidelines, etc.



Platforms



Library

[Library Home](#)

[Search Collections](#) ▼

[Hours & Locations](#) ▼

[Use The Library](#) ▼

[Get Research Help](#) ▼

[About Us](#) ▼

[Ask Us!](#)

[LOGIN](#) ▼

[Library Home](#) / [Search Collections](#) / [Open Collections](#)

Open Collections

Explore 297,630 unique digital objects.



[Advanced Search](#)

[Browse by Collection](#)



ciRcle Metadata

Metadata schema: Primarily use [Dublin Core](#)

Use the resource itself as the **preferred source** for the metadata

- Affects accurate citation; provides transparency & authority
- But it's often required that ciRcle obtain metadata from sources other than (or in addition to) the resource to ensure more fulsome description & handling of the material

These are **broad** guiding principles in our approach

- Regularly changing & expanding our practices to determine how we can support emerging forms of scholarship
- May deviate from or adjust our practices to serve broader goals for inclusivity, cultural sensitivity, and harm reduction



clRcle Workflows

For everything except graduate student works, we provide a **mediated deposit** service

- We receive permissions, resource file(s), and in some cases metadata directly from the content provider
- We then create the item record(s) on their behalf

Allows us to work closely with the content providers, to ensure there is:

- Content & metadata that serves long-term usability & preservation of the works
- Complete & accurate metadata



ciRcle Workflows: Collaboration within the Library

All ciRcle metadata undergoes review by cataloguing team in the Library's Technology, Discovery, & User Experience (TDUX) unit

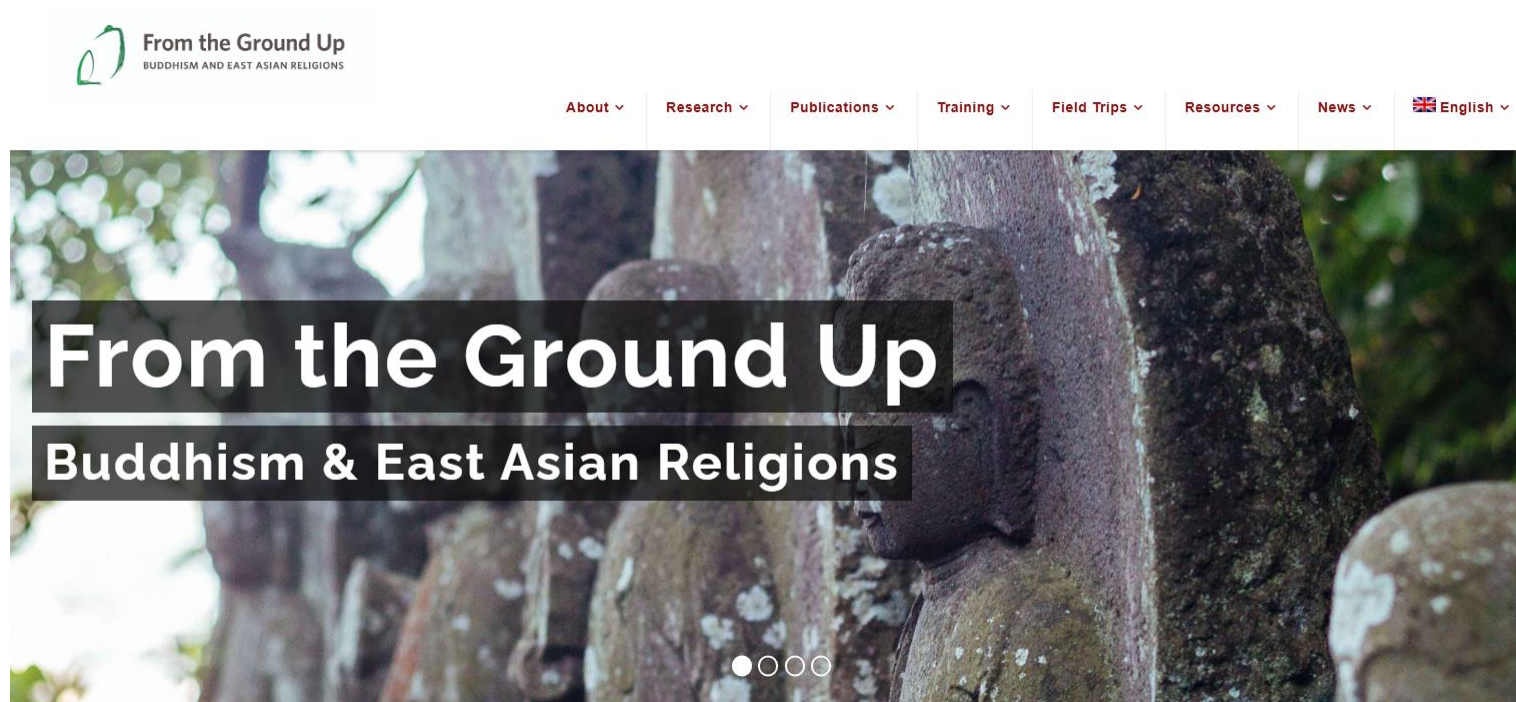
- Aim for ciRcle metadata to broadly follow existing library cataloguing standards & established controlled vocabularies (where possible & appropriate)

We maintain the [ciRcle Metadata Manual](#)

- Documents current approaches to ciRcle metadata, decisions & deviations from standard cataloguing practices



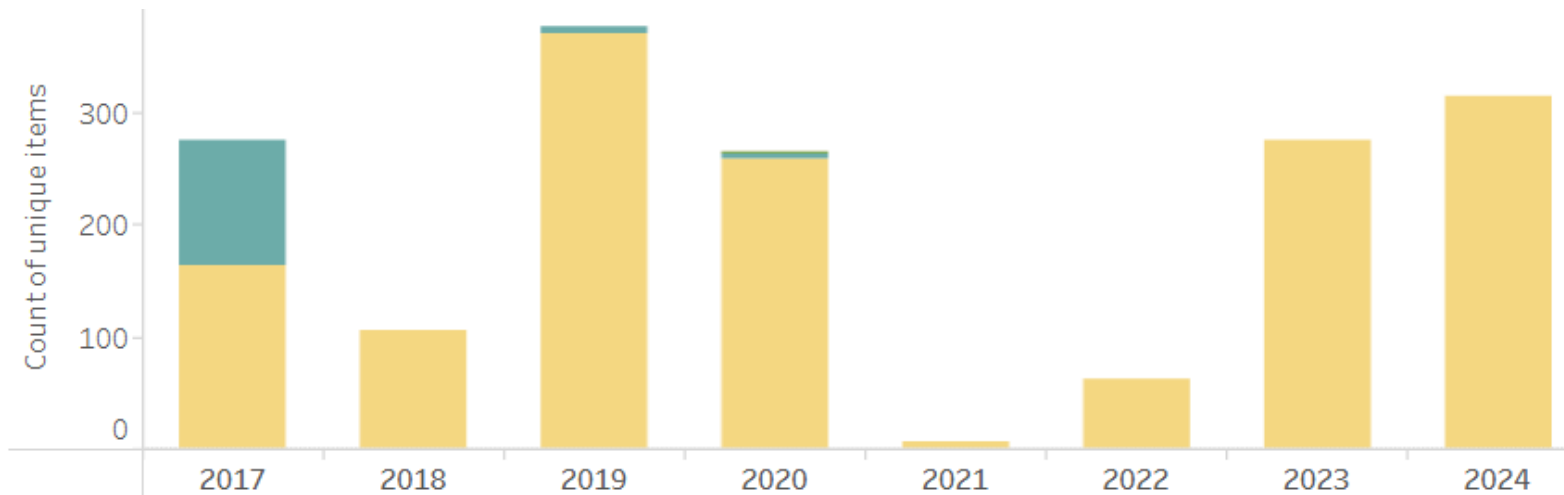
From the Ground Up: Buddhism and East Asian Religions



1,500+ item records containing field research of images, videos, and other research material collected in Asia



From the Ground Up: Buddhism and East Asian Religions



	Grand Total	
	Items	% of total
Grand Total	1,558	100%
Still Image	1,550	99%
Moving Image	124	8%
Dataset	1	0%
Other	1	0%



From the Ground Up: Buddhism and East Asian Religions



From the Ground Up: Buddhism and East Asian Religions

UBC Faculty Research and Publications

Hall of the Jade Emperor (Yuhuang dian 玉皇殿), Fengxian guan (奉仙觀)

Rusk, Bruce, 1972-; Liu, Jie; Wu, Sijia


Description

The Hall of the Jade Emperor (Yuhuang dian 玉皇殿) in the Fengxian guan 奉仙觀, a Daoist temple in Jiyuan, Henan, China. The single-eaved hall dates to the Ming dynasty (1368-1644), and portions of the wooden columns and roof supports are original; the roof and walls and roof have been renovated more recently. The south-facing building lies in the south center of the main courtyard of the temple courtyard. Photos 1 to 5 show the front face, entrance, and roof details. Photos 6 and 7 show the west side, photo 8 the rear. Photos 9 to 11 show the interior, including the main altar with a stature of the Jade Emperor and a side table with figures of wealth gods.

Item Metadata

Title	Hall of the Jade Emperor (Yuhuang dian 玉皇殿), Fengxian guan (奉仙觀)
Creator	Rusk, Bruce, 1972-; Liu, Jie; Wu, Sijia
Contributor	From the Ground Up: Buddhism & East Asian Religions (FROGBEAR Project)
Date Issued	2017-05-28
Description	The Hall of the Jade Emperor (Yuhuang dian 玉皇殿) in the Fengxian guan 奉仙觀, a Daoist temple in Jiyuan, Henan, China. The single-eaved hall dates to the Ming dynasty (1368-1644), and portions of the wooden columns and roof supports are original; the roof and walls and roof have been renovated more recently. The south-facing building lies in the south center of the main courtyard of the temple courtyard. Photos 1 to 5 show the front face, entrance, and roof details. Photos 6 and 7 show the west side, photo 8 the rear. Photos 9 to 11 show the interior, including the main altar with a stature of the Jade Emperor and a side table with figures of wealth gods.
Subject	Fengxian Temple; Daoism; Temples; Ming dynasty; Jade Emperor (Yuhuang)
Geographic Location	Jiyuan Shi (China); 35.100278; 112.573611
Type	Still Image

11 Files



DSC_0587 [01].jpg (2.35MB)

Open In Image Viewer

Download Image

Embed Image

Scroll for more...

Permanent URL (DOI):

<https://dx.doi.org/10.14288/1.0348721>

Hall of the Jade Emperor (Yuhuang dian 玉皇殿), Fengxian guan (奉仙觀)



Metadata Guideline & Template Development

FROGBEAR project outputs were expected to:

- Be in the 1000s of files
- Be created by numerous, diverse teams with varying levels of familiarity with metadata, over many years of field work
- Be primarily non-textual multimedia material (e.g. images, video)
- Include significant amounts of non-English & multilingual material



[Qingfu gong \(清福宮\)](#)



[Buddha Figure in Pavilion of Expressing Sympathy for Loyal Officials \(Minzhong ge 憫忠閣\), Fayuan Temple \(法源寺\)](#)



Metadata Guideline & Template Development

clRcle needed to ensure focus remained on the metadata required to fulfill the repository's mandate, while considering future applications, broader interoperability, and long-term sustainability

- **Could not** overhaul schema or add new specific fields
- **Could** consider how to clarify/expand current guidelines, and leverage conversations beyond this project
 - Example: Field site latitude & longitude values

Title	Diji gong (地基公)
Creator	Anderl, Christoph ; Shen, Lien Fan ; Burdorf, Suzanne ; Yan, Weiguang
Contributor	From the Ground Up: Buddhism & East Asian Religions (FROGBEAR Project)
Date Issued	2017-06-07
Description	Front view of the shrine next to a bridge, protecting the foundation of the bridge [1]. Incense site next to the temple [2]. Altar of Diji gong 地基公 [3]. Roof of the shrine [4]. 360° view of the shrine [5].
Subject	Daoist shrine
Geographic Location	New Taipei City (Taiwan) ; 25.27551 ; 121.546176



Guideline & Template Development: Metadata Creation

[FROGBEAR support materials](#)

Describing your data

Describing your data

[Documentation:Library:Circle/FROGBEAR Describing your data](#)

This document explains how to describe your data when filling out the metadata spreadsheet. Every item in the collection must be accompanied by metadata so that users can find it and understand it.

Title metadata

[Documentation:Library:Circle/FROGBEAR Title metadata](#)

This document describes how to record titles for both textual and non-textual materials.

Description metadata

[Documentation:Library:Circle/FROGBEAR Description metadata](#)

This document describes the rules and process of filling in the description field.

Item record example

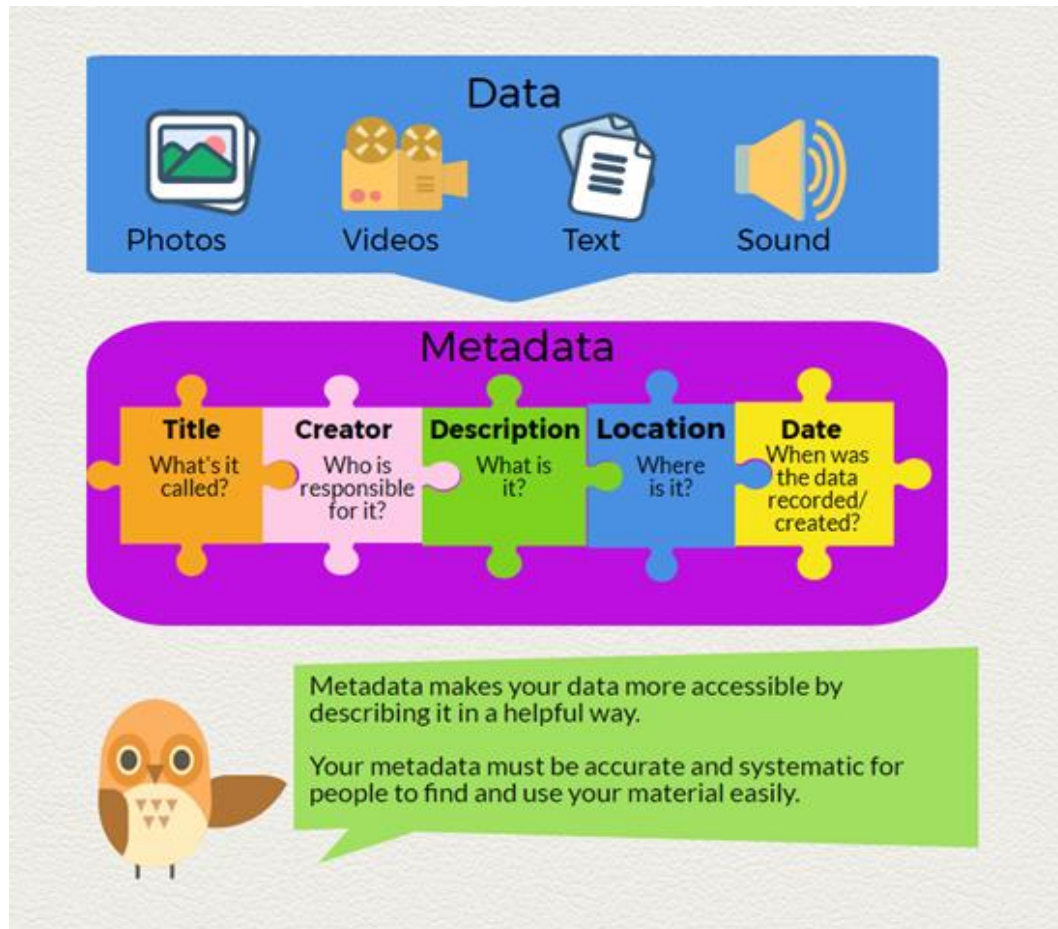
[Documentation:Library:Circle/FROGBEAR Item record example](#)

This document shows the process of how data (photos/videos) and metadata (descriptions) become item records in UBC Open Collections.



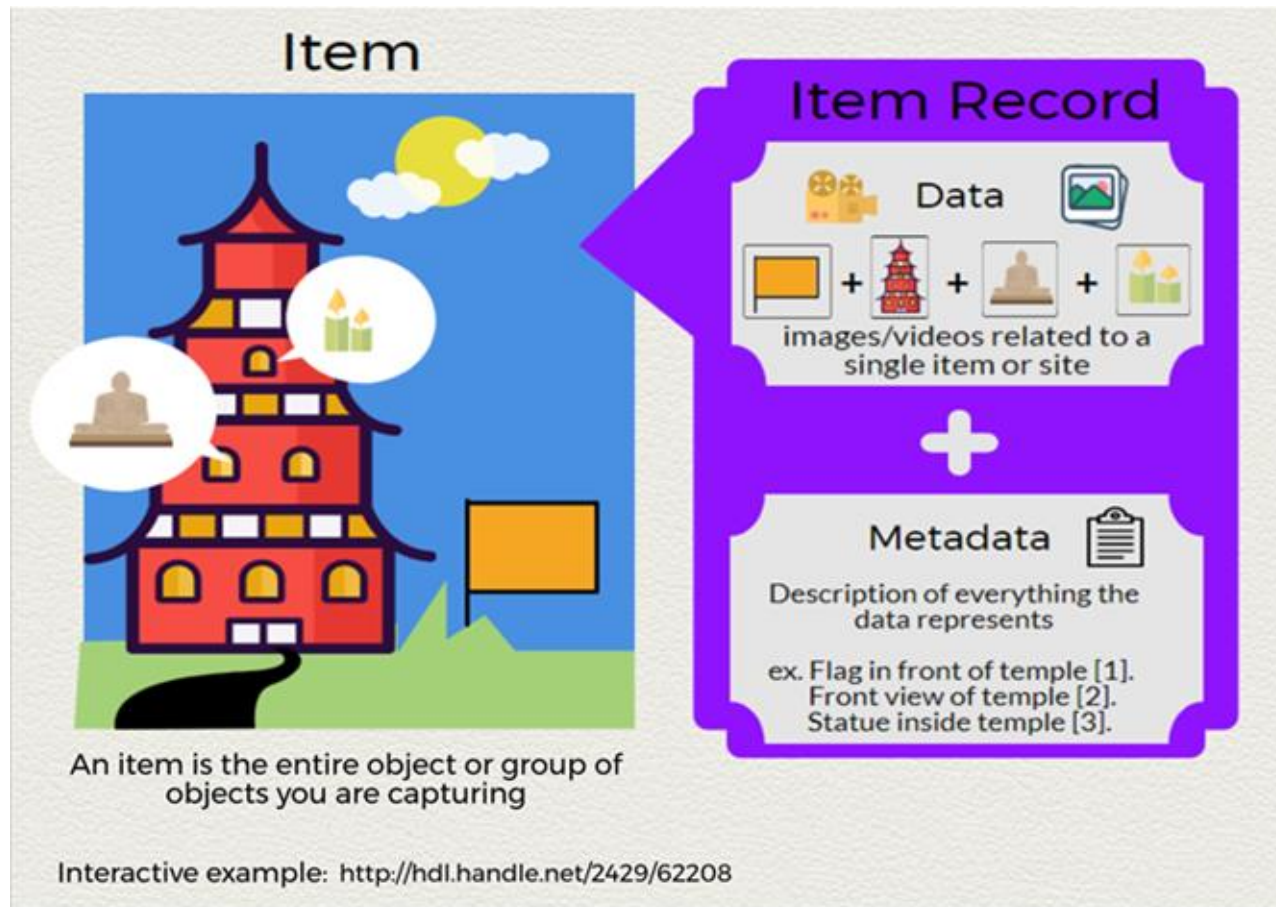
Guideline & Template Development: Metadata Creation

FROGBEAR Describing your data



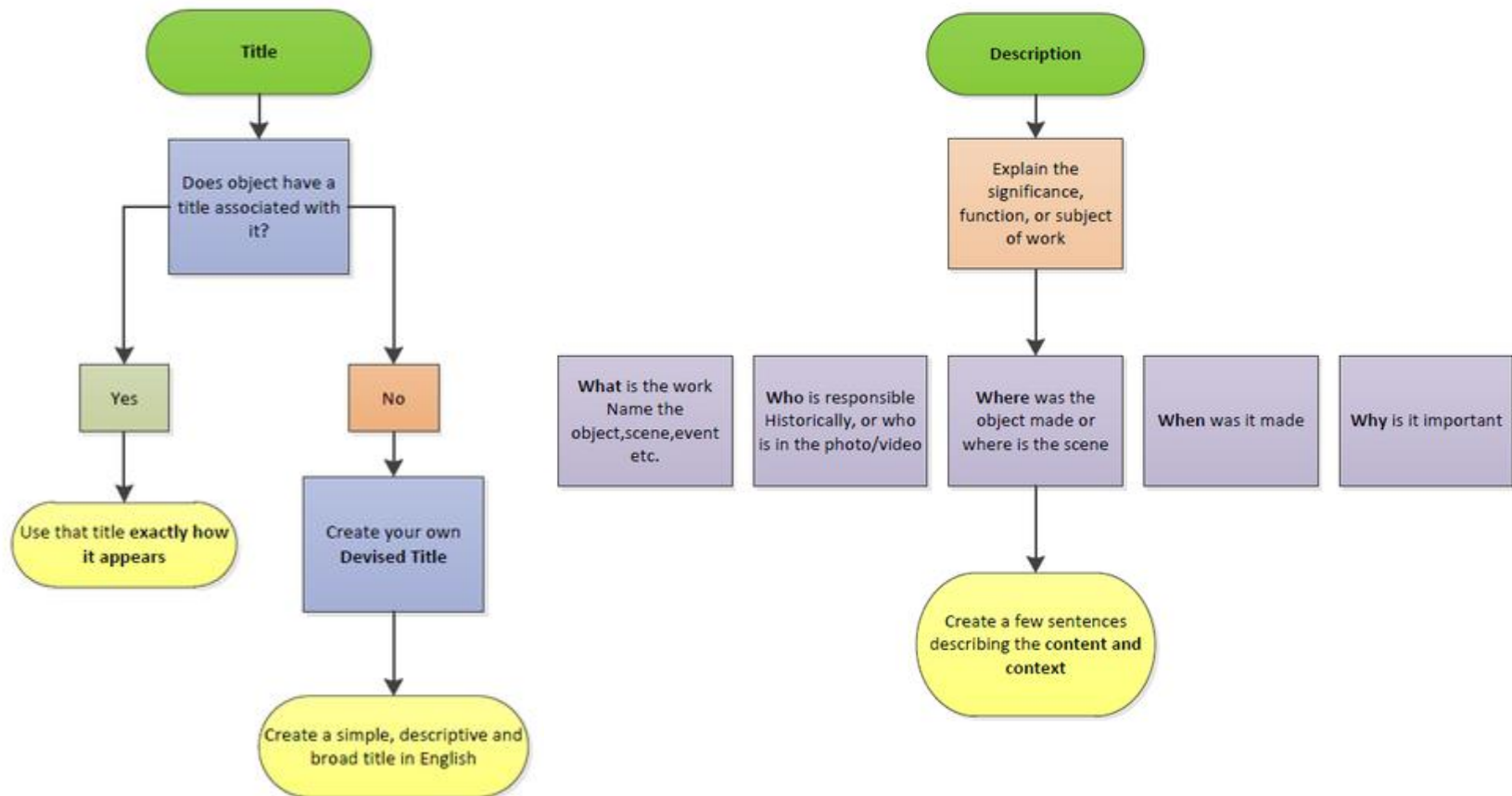
Guideline & Template Development: Metadata Creation

FROGBEAR Item record example



Guideline & Template Development: Metadata Creation

FROGBEAR Title metadata & FROGBEAR Description metadata



Guideline & Template Development: Metadata Capture



	D	E	F	G	H	K
1	Repeatable fields can have multiple entries eg. Create/Author. For repeatable fields, use the double pipe to separate each entry.	Consult the FROGBEAR wiki instructions for more help on how to use this spreadsheet		Consult the FROGBEAR wiki section on creating Titles		
2	Filename(s)	Cluster Trip Name	Creator/Author(s)	Title	Language	Scholarly Level
4	Required; Repeatable ()	Required	Required; Repeatable ()	Required	Required; Repeatable ()	Required; Repeatable ()
5	<i>What are the filenames associated with each title? Enter them in the order that you would like them to appear in the ciRcle record.</i>	<i>What is the number & name of your research cluster?</i>	<i>Who was responsible for creating the digital objects? Enter as "Last Name, First Name" or name of unit as applicable.</i>	<i>What is the title for this item? Titles should be in English as much as possible, but you may add Romanized/Asian translations in parentheses when applicable. NB This is the title of the item record as it will appear in ciRcle. You can have multiple files grouped under a single title (e.g. multiple angles of the same sculpture)</i>	<i>What language is the content in? Use "none" for images where no text is visible/prominent.</i>	<i>What is the scholarly status of the creators/authors? Enter all that apply: Faculty; Postdoctoral; Researcher; Graduate; Undergraduate; Other</i>
6	DSC_0587 [01].jpg _IMG2296 [02].jpg _IMG2297 [03].jpg DSC03752 [04].jpg DSC03753 [05].jpg _IMG2299 [06].jpg DSC03749 [07].jpg DSC03756 [08].jpg DSC03701 [09].jpg DSC03690 [10].jpg DSC03697 [11].jpg	Cluster 2.1: Authenticity and Authority	Rusk, Bruce Liu, Jie Wu, Sijia	Hall of the Jade Emperor (Yuhuang dian 玉皇殿), Fengxian guan (奉仙觀)	None	Faculty Postdoctoral Graduate



Considerations for non-English & multilingual material

FROGBEAR is the largest collection in cIRcle featuring non-English metadata

- Outputs have intricate histories, altered/variant names in different East Asian languages, over long periods of time, across multiple geographic locations

cIRcle uses English as primary language for encoding metadata

- cIRcle did not have the language expertise
- cIRcle metadata standards were primarily designed to describe traditional scholarly outputs

Had to recognize that the metadata could not fully reflect the nuances & complexities of these outputs



Considerations for non-English & multilingual material

clRcle recognizes that language application depends on the nature of the content & on how language is represented in that content

- Strive for the most representative metadata that serves description & discovery of diverse content

Ability to collaborate within the Library & with the FROGBEAR experts helped mitigate some of these limitations, and demonstrated positive impacts to resulting items

[Naga Altar in the Courtyard of the Bang Khun Thian Temple](#)
(โรงเรียนหาโพธิ์สัตว์กอนฉิม)
(菩薩壇)



Processing to cIRcle: Standardized metadata

Item Metadata

Title	Great Hall of the Three Clarities (Sanqing dadian 三清大殿), Fengxian guan (奉仙觀)
Creator	Rusk, Bruce, 1972-; Liu, Jie; Wu, Sijia
Contributor	From the Ground Up: Buddhism & East Asian Religions (FROGBEAR Project)
Date Issued	2017-05-28
Description	<p>The Great Hall of the Three Clarities (Sanqing dadian 三清大殿) in the Fengxian guan 奉仙觀, a Daoist temple in Jiyuan, Henan, China. This five-bay wide hall is the main building of the temple complex, and the oldest, dating to 1184 (the first temple on the site was built in 685). The massive wooden beams and brackets are largely original. The walls and roof have been repeatedly renovated. The south-facing building lies in the north centre of the main courtyard of the temple courtyard. Photos 1 to 3 show the front entrance. Photos 4 and 5 show the construction of the west and east earth and brick walls. Photos 6 to 8 show the main altar area, including a large statue of the deified Laozi (Taishang laojun 太上老君) and tablets representing the Three Clarities worshiped in the hall: Yuanzhi tianzun 元始天尊 or Yuqing 玉</p>
Subject	Fengxian Temple; Daoism; Temples; Ming dynasty; Architecture
Geographic Location	Jiyuan Shi (China); 35.100708; 112.573632
Type	Still Image
Language	zxx
Notes	Author Affiliations: Lanzhou University, Zhejiang University.
Series	Cluster 2.1: Authenticity and Authority
Date Available	2017-07-06
Provider	Vancouver : University of British Columbia Library
Rights	Attribution 4.0 International
DOI	10.14288/1.0348722
URI	http://hdl.handle.net/2429/62159
Affiliation	Arts, Faculty of; Non UBC; Asian Studies, Department of



Permanent URL (DOI):

<https://dx.doi.org/10.14288/1.0348722>

Generate Citation

Download Metadata

Rights



Attribution 4.0 International



Processing to cIRcle: Individual vs. batch

2017-2021:

- One-off mediated deposits
- Roughly 900 items
- cIRcle student assistant, then FROGBEAR research assistant processing new content into cIRcle

2021-2024:

- Batch processing through newly integrated custom DSpace feature
- cIRcle team processing new content
- Metadata template spreadsheet facilitated shift to batch processing



Considerations for non-English & multilingual material

cIRcle uses English as primary language for encoding metadata

- Non-English and specialized characters in the Unicode standard are accepted
- Capacity to verify validity of characters is limited

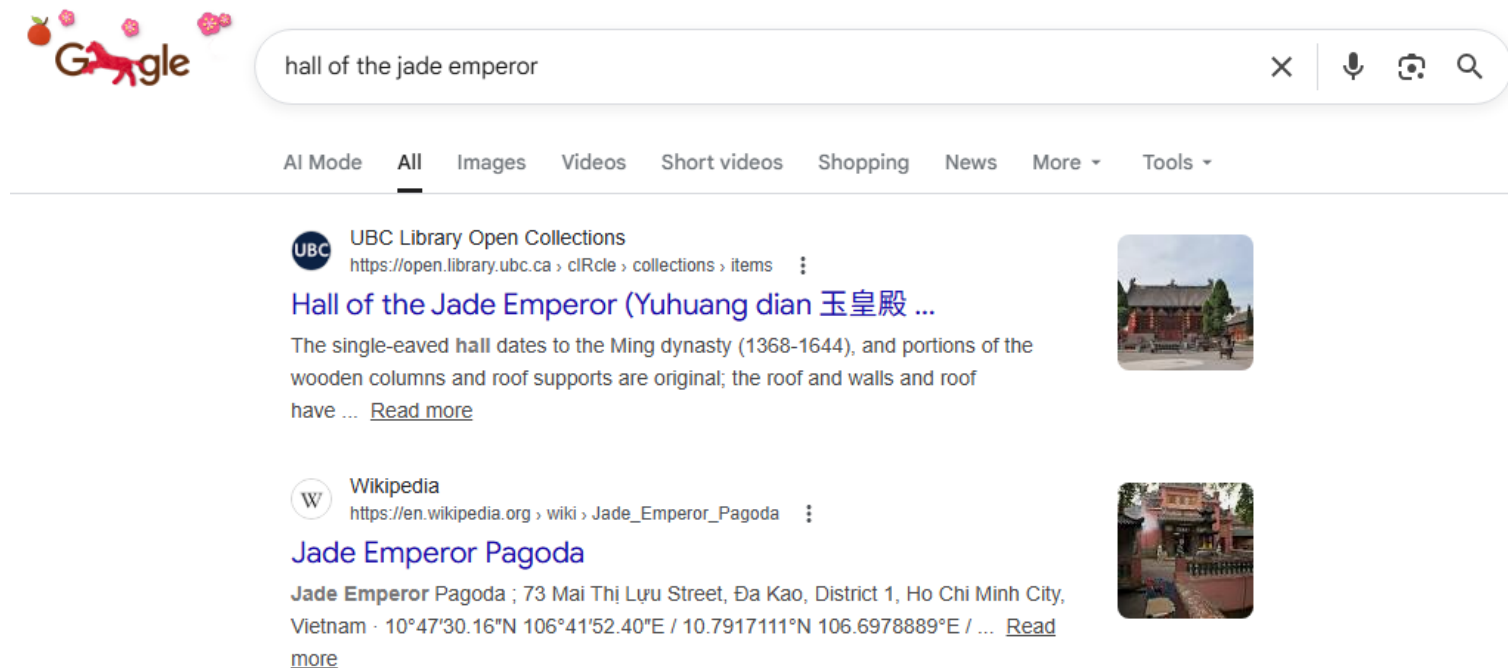
Metadata inconsistencies due to volume, complexity, and non-English languages

- cIRcle did not have the language expertise, nor subject expertise for non-textual content
- Content providers are both language and subject experts



Indexing, Discovery, and Harvesting

Along with many library-related platforms & discovery layers, cIRcle content is indexed in common search engines



The image shows a Google search results page for the query "hall of the jade emperor". The search bar at the top contains the text "hall of the jade emperor" and has icons for search, voice search, and image search. Below the search bar, there are navigation tabs for "All Mode", "All", "Images", "Videos", "Short videos", "Shopping", "News", "More", and "Tools". The search results are displayed in a list format. The first result is from "UBC Library Open Collections" with the URL "https://open.library.ubc.ca/cIRcle/collections/items". The title is "Hall of the Jade Emperor (Yuhuang dian 玉皇殿 ...)" and the description is "The single-eaved hall dates to the Ming dynasty (1368-1644), and portions of the wooden columns and roof supports are original; the roof and walls and roof have ... [Read more](#)". To the right of the text is a small image of a traditional Chinese building. The second result is from "Wikipedia" with the URL "https://en.wikipedia.org/wiki/Jade_Emperor_Pagoda". The title is "Jade Emperor Pagoda" and the description is "Jade Emperor Pagoda ; 73 Mai Thi Lưu Street, Đa Kao, District 1, Ho Chi Minh City, Vietnam · 10°47'30.16"N 106°41'52.40"E / 10.7917111°N 106.6978889°E / ... [Read more](#)". To the right of the text is a small image of a pagoda.

Between DSpace & OC, can use OAI-PMH & REST APIs, along with metadata crosswalking, to facilitate metadata harvesting



Indexing, Discovery, and Harvesting: FROGBEAR Portal



Frogbear Database of Religious Sites in East Asia frogbear.org

[About](#) [Log in](#)

The FROGBEAR Database is a public database displaying texts, images, videos, and other research content collected during the SSHRC-funded research project on Buddhism and East Asian Religions.

Hall of the Jade Emperor



Cluster

Year

Keyword

Location

Media



Displaying results with search value **Hall of the Jade Emperor** [Clear](#)

1-6 of 6

< Page 1 of 1 >



Image

Hall of the Jade Emperor (Yuhuang dian 玉皇殿), Fengxian guan (奉仙觀)

Cluster [Cluster 2.1: Authenticity and Authority](#) [2017](#)

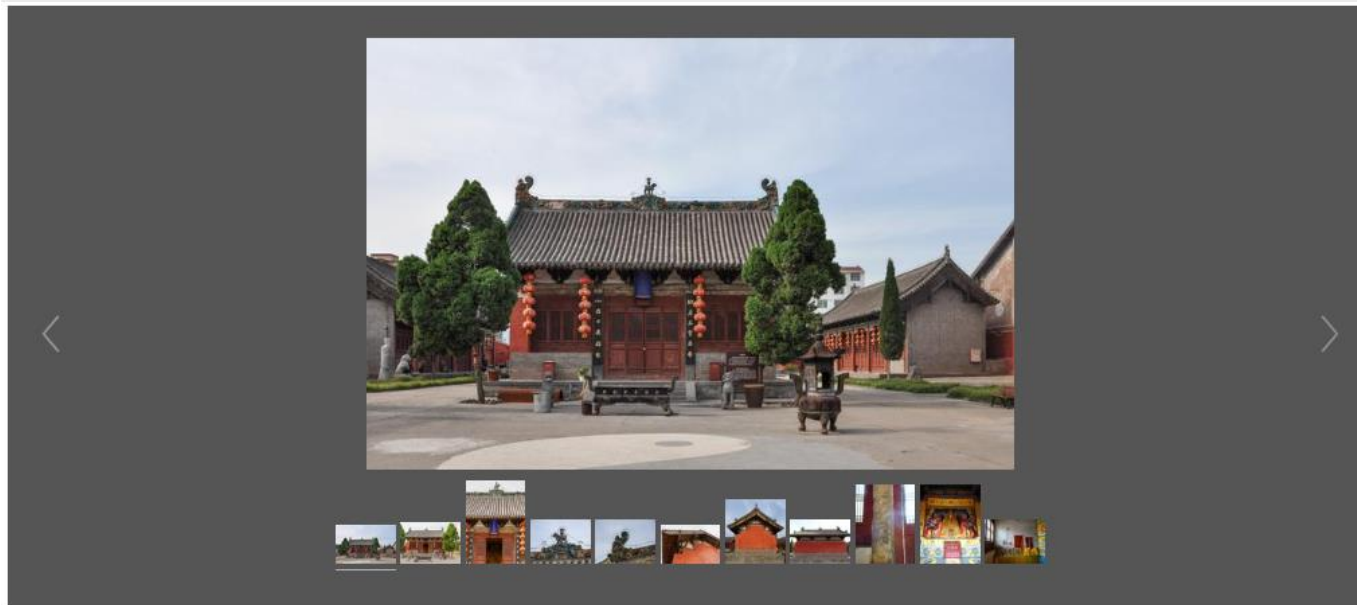
Keywords [Fengxian Temple](#) [Daoism](#) [Temples](#) [Ming dynasty](#) [Jade Emperor \(Yuhuang\)](#)

Location [Jiyuan Shi \(China\)](#)

Description

[View record on map](#)

Indexing, Discovery, and Harvesting: FROGBEAR Portal



Title	Hall of the Jade Emperor (Yuhuang dian 玉皇殿), Fengxian guan (奉仙觀)
Description	The Hall of the Jade Emperor (Yuhuang dian 玉皇殿) in the Fengxian guan 奉仙觀, a Daoist temple in Jiyuan, Henan, China. The single-eaved hall dates to the Ming dynasty (1368-1644), and portions of the wooden columns and roof supports are original; the roof and walls and roof have been renovated more recently. The south-facing building lies in the south center of the main courtyard of the temple courtyard. Photos 1 to 5 show the front face, entrance, and roof details. Photos 6 and 7 show the west side, photo 8 the rear. Photos 9 to 11 show the interior, including the main altar with a stature of the Jade Emperor and a side table with figures of wealth gods.
Keywords	Fengxian Temple Daoism Temples Ming dynasty Jade Emperor (Yuhuang)
Cluster	Cluster 2.1: Authenticity and Authority
Location	Jiyuan Shi (China), N 35.100278 , E 112.573611
Language	No Linguistic Content,Not Applicable
Creator	Rusk, Bruce, 1972-; Liu, Jie; Wu, Sijia

[Hall of the Jade Emperor \(Yuhuang dian 玉皇殿\), Fengxian guan \(奉仙觀\)](#)



Considerations for non-English & multilingual material

Known challenges:

- Limitations in indexing, search, and retrieval of non-English and specialized characters
- Compatibility issues across UBC and non-UBC search and discovery platforms

clRcle is committed to ongoing and active pursuit of accurate indexing, search, and retrieval of non-English content



[Jinshan si \(金山寺\)](#)



Key Takeaways

Try to get involved as a collaborator (or at least consultant) as early as possible

- If there's an opportunity, encourage inclusion of repository processing as part of the funding
- It's much easier to provide guidance on what's needed before the data collection begins
- The way the content is organized & received has a significant impact on the processing & resulting item records

[Temple to the Dragon Kings and Avalokiteśvara-Guanyin \(Longwang, Guanyin miao 龍王、觀音廟\)](#)



Key Takeaways

Recognize the iterative nature of collaboration

- There were a lot of adaptations needed by all teams as the field collection got underway
 - Tried to receive material as quickly as possible & identify areas for adjusted guidance
- Extensive external collaboration with the FROGBEAR team, and internal collaboration with our cataloguing & metadata team
 - Over 110 FROGBEAR contributors & almost 20 UBC librarians & staff participated
 - Combined multiple areas of repository, metadata, and subject expertise to work towards common goals & strong resulting metadata to serve the content



Key Takeaways

Balancing the various needs of users & emerging forms of scholarship, while ensuring metadata sustainability & applicability across the repository can be a challenge

- Able to extend questions/case studies into development of new repository-wide metadata guidelines, enabling us to support UBC's robust research community more broadly
- Decisions weren't permanent, and could be adjusted as more information was gained, best practices & established standards changed, etc.

[Close-up of reliefs, east wall of Thousand Buddha cave \(Qianfodong 千佛洞\), Piliudong 毗廬洞](#)



Key Takeaways

There are numerous considerations for non-English & multilingual material

- Though cIRcle metadata cannot fully reflect the nuances of these objects, collaborative metadata creation efforts between the Library & subject experts can significantly increase the discovery, visibility, understanding, and use of these valuable & unique East Asian outputs
- Though there are noted limitations, cIRcle is pursuing further exploration & enhancements as new developments & resourcing permits



Ongoing Impacts

Improved processes to support grant-funded research projects

- Best practices for metadata, content creation, and permissions leveraged for other projects
- Example: [Expertise, Labour, and Mobility in Nepal's Post-Conflict, Post-Disaster Reconstruction \(Reconstructing Nepal Project\)](#)

UBC Community, Partners, and Alumni Publications

House propped up by wooden poles and draped with tarpaulin

Subedi, Prakash

Description

Many old settlements in and around the Kathmandu Valley had adjoining houses, stretching out on both sides. It is believed that most of them survived during the 2015 earthquake because of their adjoined construction. However, many houses were also damaged extensively, exposing and weakening the adjoining houses. Taken during the 1st phase of fieldwork conducted by the research team based at Social Science Baha in Kathmandu, Nepal, as part of the SSHRC Partnership Development Grant, 'Expertise, Labour and Mobility in Nepal's Post-Conflict, Post-Disaster Reconstruction'. See project details at <https://elmnr.arts.ubc.ca/>.

Item Metadata

Title	House propped up by wooden poles and draped with tarpaulin
Creator	Subedi, Prakash
Contributor	Expertise, Labour, and Mobility in Nepal's Post-Conflict, Post-Disaster Reconstruction (Reconstructing Nepal Project)
Date Issued	2018-03-14



[House propped up by wooden poles and draped with tarpaulin](#)



Ongoing Impacts

Increased capacity for large ongoing or retrospective deposits

- Metadata template spreadsheets
- Batch import processing

Improved instruction, outreach, and project reporting activities

- [Blog posts](#)
- [Impact & Activity Reports](#)

Find out more on

the [FROGBEAR website](#)



[Opera Stage \(Xitai 戲台\) and Family Shrine \(Jia miao 家廟\)](#)

UBC LIBRARY

Thank you!



THE UNIVERSITY
OF BRITISH COLUMBIA
Library

